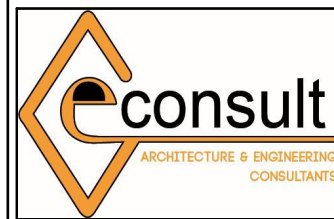




ARCHITECTS



GeConsult
ARCHITECTURE & ENGINEERING CONSULTANTS
Office No. 529,
5th Floor, 680 Hotel Building,
Muindi Mbingu Street,
Off Kenyatta Avenue,
geconsultteam@gmail.com
www.geconsultarchitects.com
P.O Box 103525 - 00101 Nairobi, Kenya
Tel: +254 724 008 839 / +254 725 178 875

PROJECT DETAILS

Project Title:

PROPOSED BUTCHERY HOUSE
AT HUDUR

Client



IOM
Reintegration and Durable Solutions
(RDS) Unit

Drawing Title:

SITE PLAN

Revision No.

Drawn by:

B.M

Checked & Approved by

GeConsult

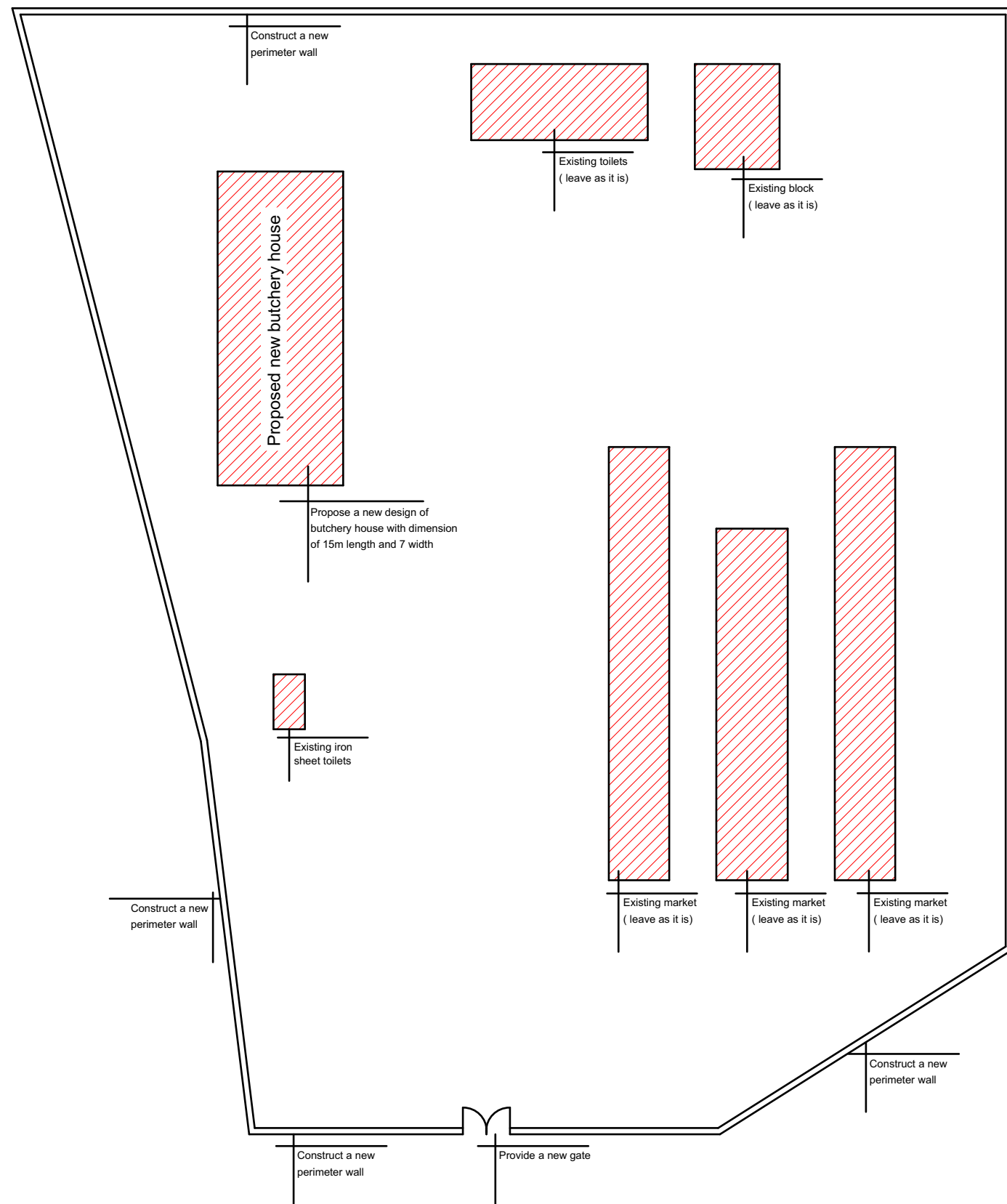
Sheet No.

Scale:

Date:

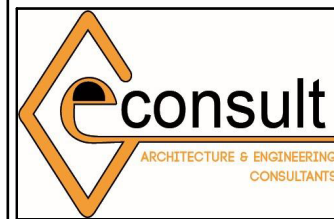
AUGUST 2018

ARCHITECTURAL DRAWINGS



HUDUR Butchery House

ARCHITECTS



GeConsult
 ARCHITECTURE & ENGINEERING CONSULTANTS
 Office No. 529,
 5th Floor, 680 Hotel Building,
 Muindi Mbingu Street,
 Off Kenyatta Avenue,
 geconsultteam@gmail.com
 www.geconsultarchitects.com
 P.O Box 103525 - 00101 Nairobi, Kenya
 Tel: +254 724 008 839 / +254 725 178 875

PROJECT DETAILS

Project Title:

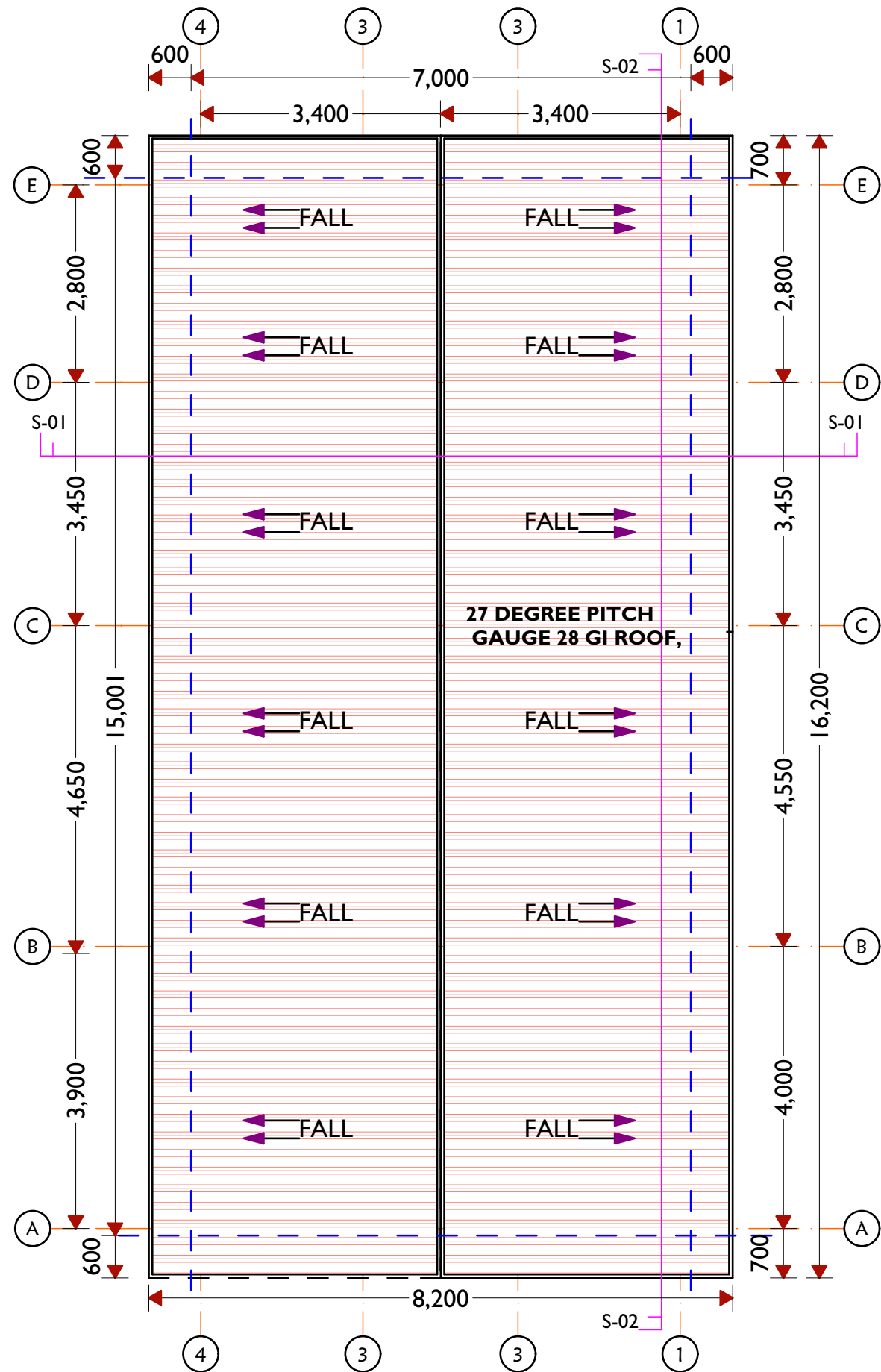
**PROPOSED BUTCHERY HOUSE
 AT HUDUR**

Client

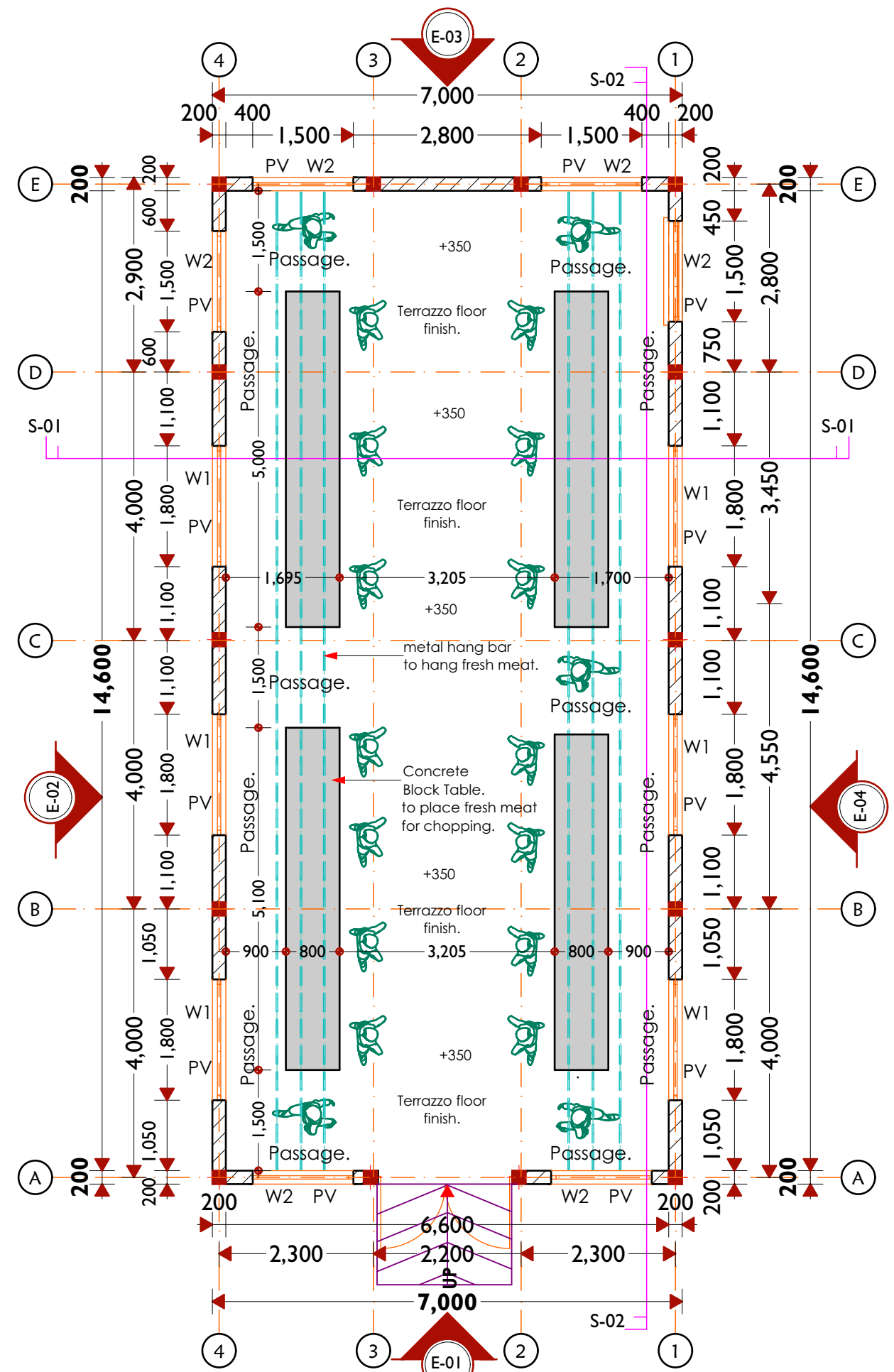


**IOM
 Reintegration and Durable Solutions
 (RDS) Unit**

Drawing Title: GeConsult		Revision No.	
Drawn by: B.M	Checked & Approved by	Sheet No.	Scale:
Date: AUGUST 2018	ARCHITECTURAL DRAWINGS		

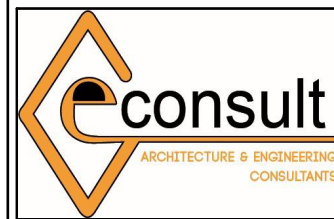


ROOF PLAN LAYOUT
SCALE 1:100



FLOOR PLAN LAYOUT
SCALE 1:100

ARCHITECTS



GeConsult
ARCHITECTURE & ENGINEERING CONSULTANTS
Office No. 529,
5th Floor, 680 Hotel Building,
Muindi Mbingu Street,
Off Kenyatta Avenue,
geconsultteam@gmail.com
www.geconsultarchitects.com
P.O Box 103525 - 00101 Nairobi, Kenya
Tel: +254 724 008 839 / +254 725 178 875

PROJECT DETAILS

Project Title:

PROPOSED BUTCHERY HOUSE
AT HUDUR

Client



IOM
Reintegration and Durable Solutions
(RDS) Unit

Drawing Title:

FLOOR PLAN LAYOUT

Revision No.

Drawn by:

B.M

Checked & Approved by

GeConsult

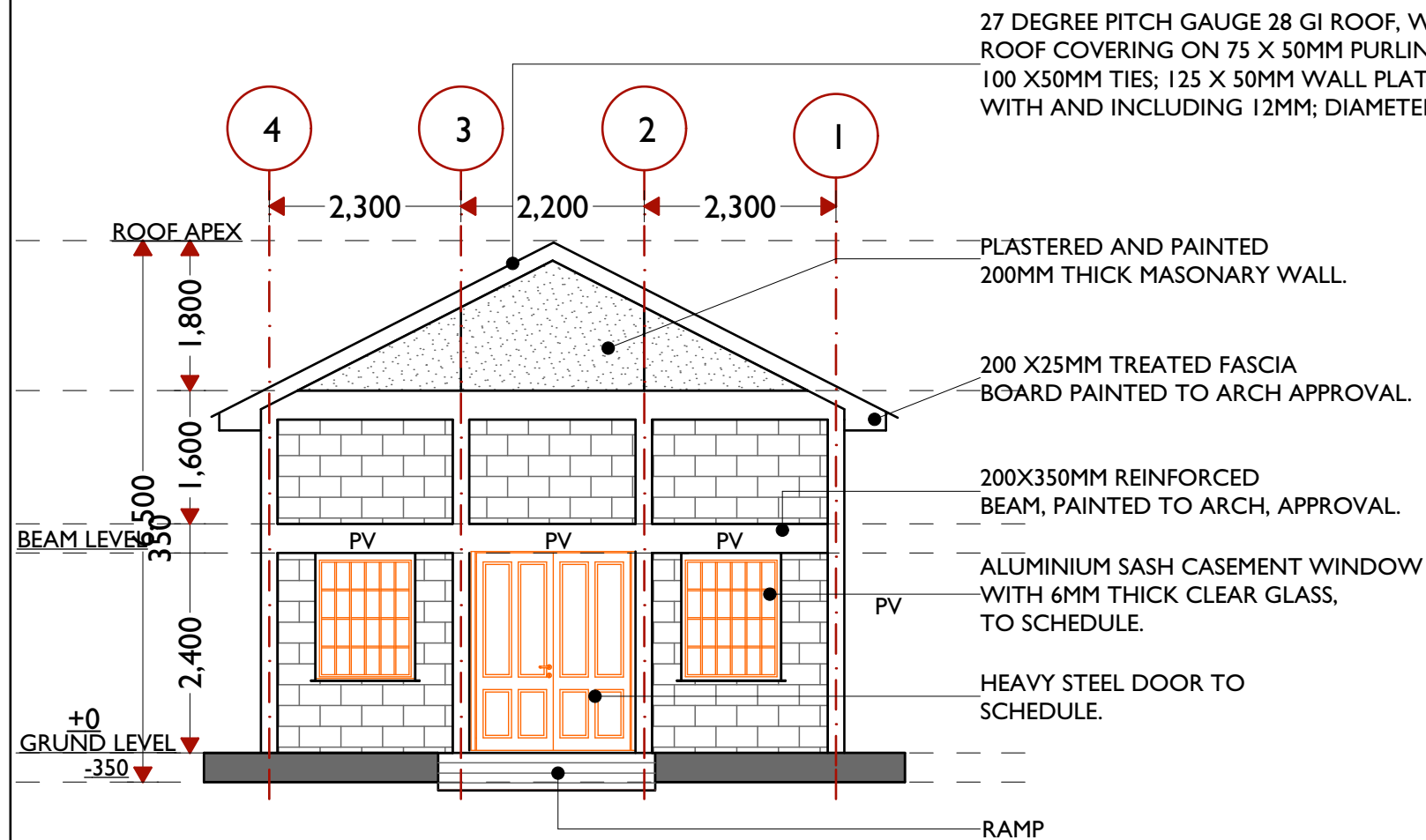
Sheet No.

Scale:

Date:

AUGUST 2018

ARCHITECTURAL DRAWINGS



27 DEGREE PITCH GAUGE 28 GI ROOF, WITH AN APPROVED ROOF COVERING ON 75 X 50MM PURLINS; 100 X 50MM STRUTS; 100 X50MM TIES; 125 X 50MM WALL PLATE; FIXED TO CONCRETE WITH AND INCLUDING 12MM; DIAMETERBOLTS AT 120MM CENTRES.

PLASTERED AND PAINTED 200MM THICK MASONRY WALL.

200 X25MM TREATED FASCIA BOARD PAINTED TO ARCH APPROVAL.

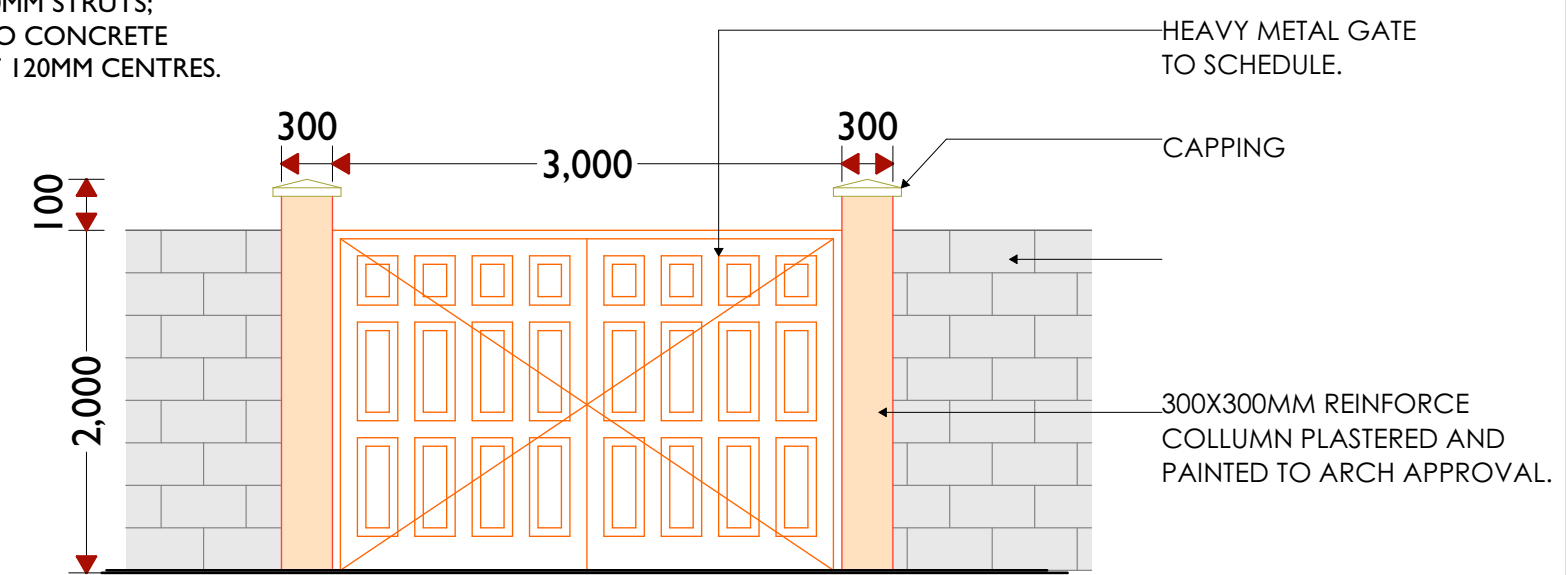
200X350MM REINFORCED BEAM, PAINTED TO ARCH, APPROVAL.

ALUMINIUM SASH CASEMENT WINDOW WITH 6MM THICK CLEAR GLASS, TO SCHEDULE.

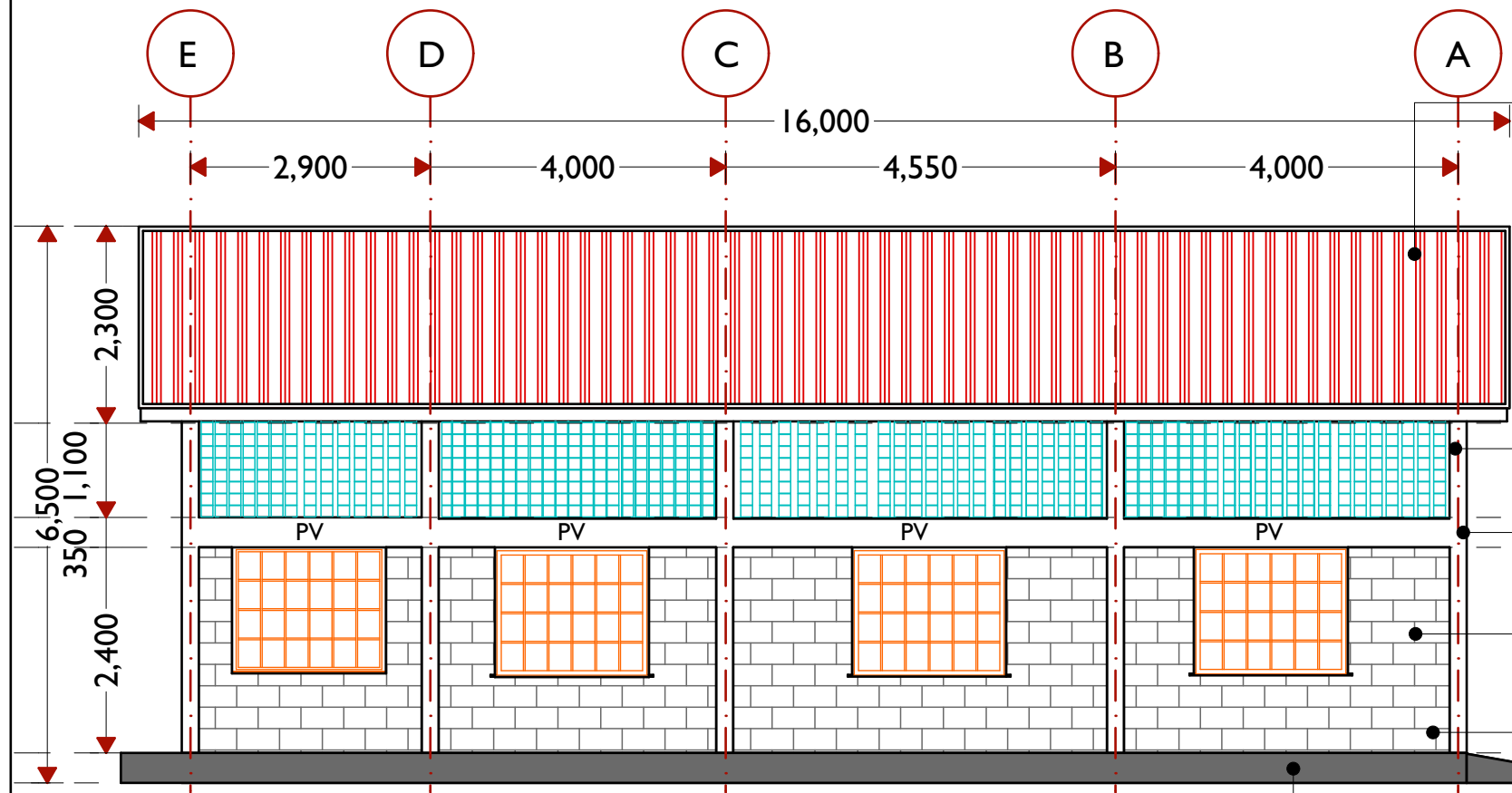
HEAVY STEEL DOOR TO SCHEDULE.

RAMP

ELEVATION E-01.
SCALE 1:100



GATE FRONT ELEVATION
SCALE 1:100



27 DEGREE PITCH GAUGE 28 GI ROOF, WITH AN APPROVED ROOF COVERING ON 75 X 50MM PURLINS; 100 X 50MM STRUTS; 100 X50MM TIES; 125 X 50MM WALL PLATE; FIXED TO CONCRETE WITH AND INCLUDING 12MM; DIAMETERBOLTS AT 120MM CENTRES

200 X25MM TREATED FASCIA BOARD, PAINTED TO ARCH, APPROVAL.

VENT BLOCK

200X350MM REINFORCED BEAM PLASTERED AND PAINTED TO ARCH, APPROVAL.

ALUMINIUM SASH CASEMENT WINDOW WITH 6MM THICK CLEAR GLASS, TO SCHEDULE.

BUSH HAMMERED NATURAL STONE 200MM THICK MASONRY WALL.

350MM THICK REINFORCED CONCRETE FLOOR SLAB.

ELEVATION E-02.
SCALE 1:100

ARCHITECTS

GeConsult
ARCHITECTURE & ENGINEERING CONSULTANTS
Office No. 529,
5th Floor, 680 Hotel Building,
Muindi Mbingu Street,
Off Kenyatta Avenue,
geconsultteam@gmail.com
www.geconsultarchitects.com
P.O Box 103525 - 00101 Nairobi, Kenya
Tel: +254 724 008 839 / +254 725 178 875

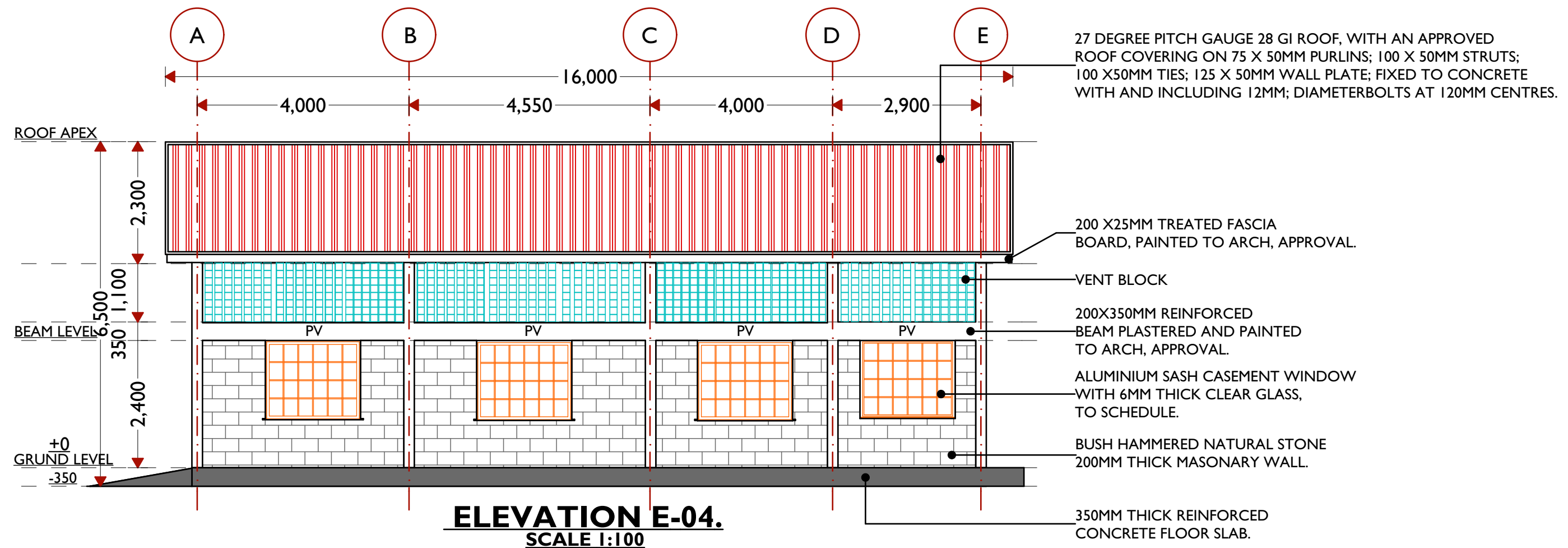
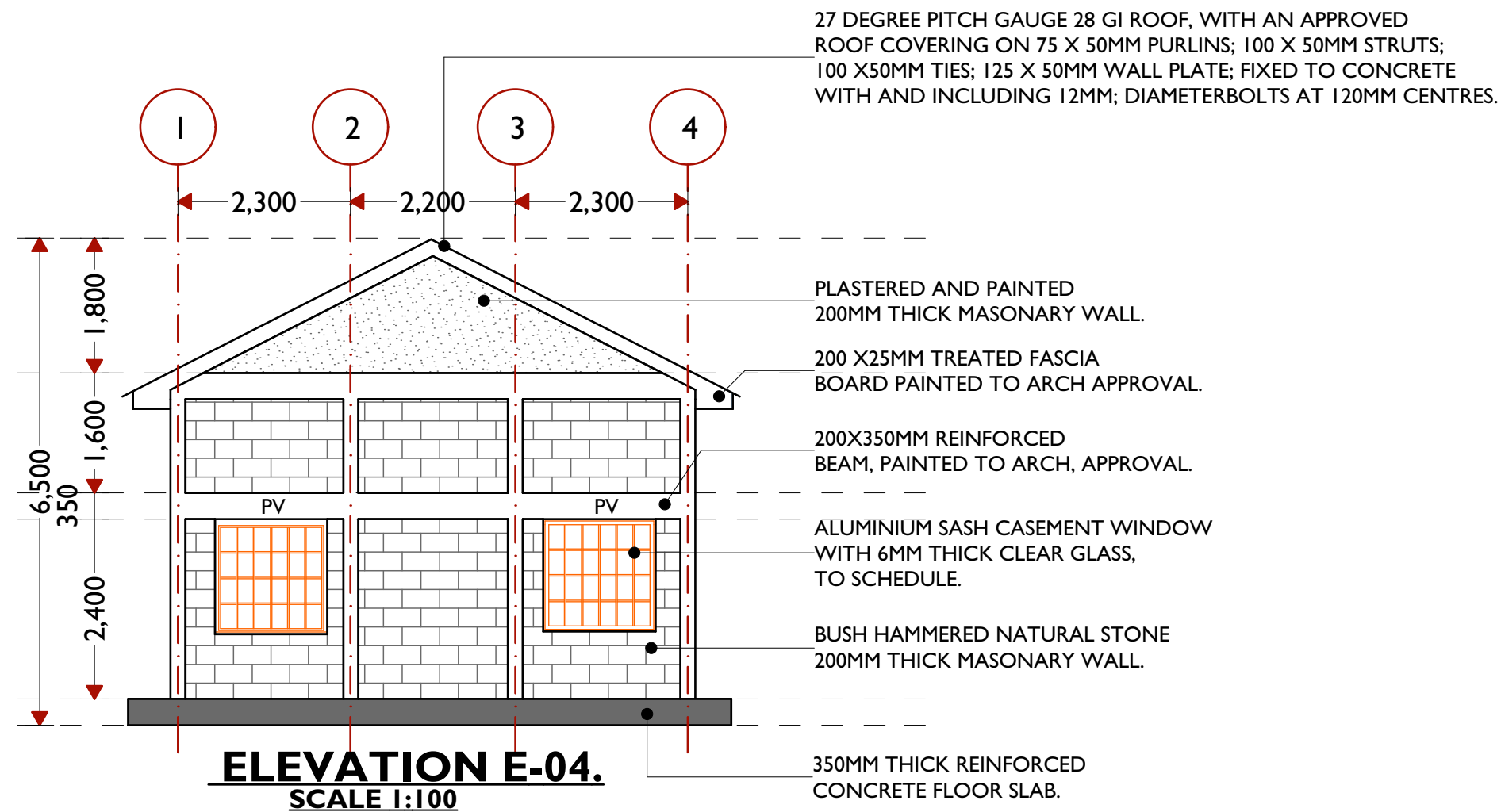
PROJECT DETAILS

Project Title: **PROPOSED BUTCHERY HOUSE AT HUDUR**

Client

IOM
Reintegration and Durable Solutions (RDS) Unit

Drawing Title:		ELEVATIONS		Revision No.	
Drawn by:	B.M	Checked & Approved by:	GeConsult	Sheet No.	Scale:
Date:	AUGUST 2018	ARCHITECTURAL DRAWINGS			



ARCHITECTS



GeConsult
ARCHITECTURE & ENGINEERING CONSULTANTS
Office No. 529,
5th Floor, 680 Hotel Building,
Muindi Mbingu Street,
Off Kenyatta Avenue,
geconsultteam@gmail.com
www.geconsultarchitects.com
P.O Box 103525 - 00101 Nairobi, Kenya
Tel: +254 724 008 839 / +254 725 178 875

PROJECT DETAILS

Project Title:

PROPOSED BUTCHERY HOUSE
AT HUDUR

Client



IOM
Reintegration and Durable Solutions
(RDS) Unit

Drawing Title:

ELEVATIONS

Revision No.

Drawn by:

B.M

Checked & Approved by

GeConsult

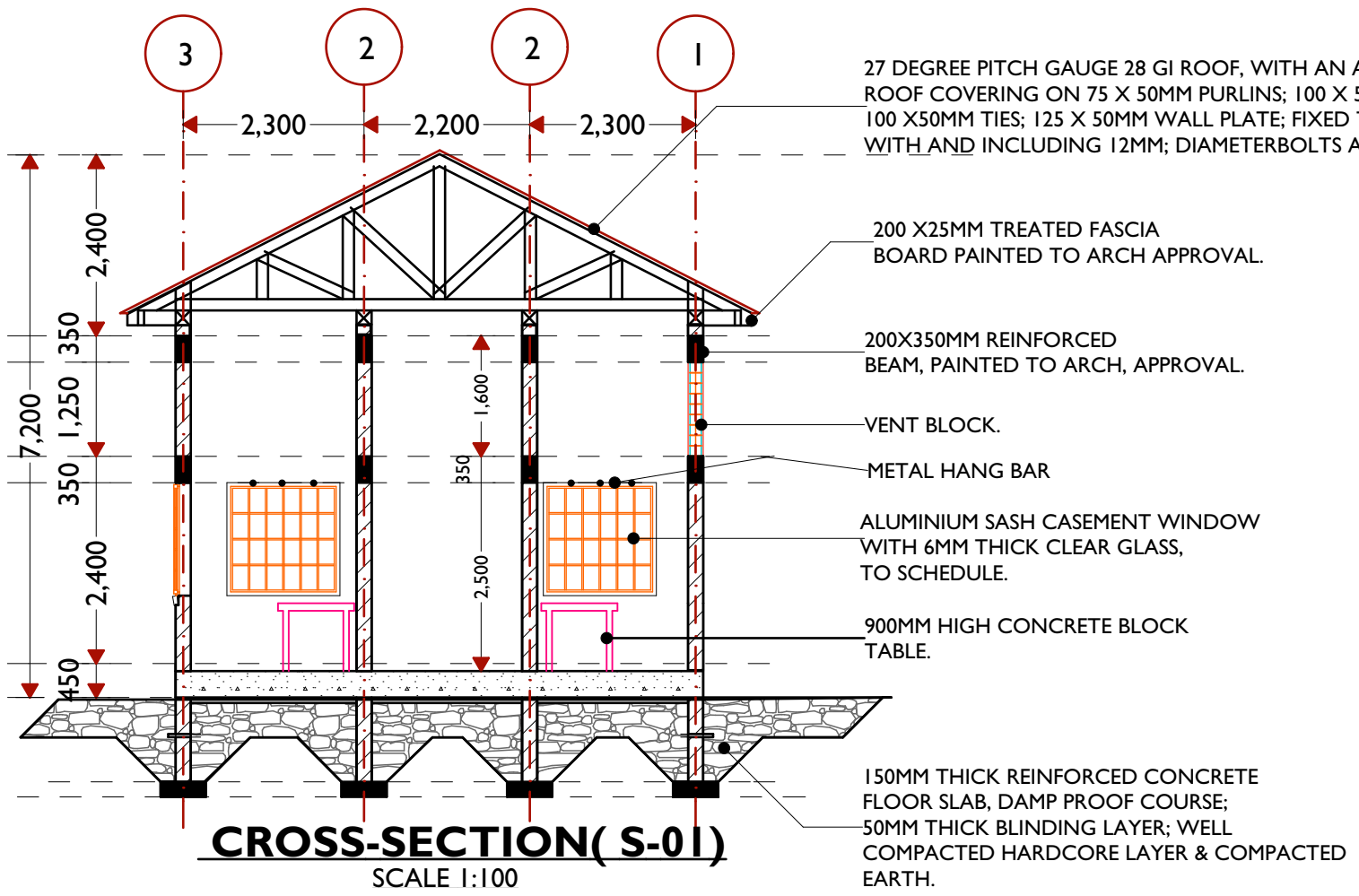
Sheet No.

Scale:

Date:

AUGUST 2018

ARCHITECTURAL DRAWINGS



27 DEGREE PITCH GAUGE 28 GI ROOF, WITH AN APPROVED ROOF COVERING ON 75 X 50MM PURLINS; 100 X 50MM STRUTS; 100 X 50MM TIES; 125 X 50MM WALL PLATE; FIXED TO CONCRETE WITH AND INCLUDING 12MM; DIAMETER BOLTS AT 120MM CENTRES.

200 X 25MM TREATED FASCIA BOARD PAINTED TO ARCH APPROVAL.

200 X 350MM REINFORCED BEAM, PAINTED TO ARCH, APPROVAL.

VENT BLOCK.

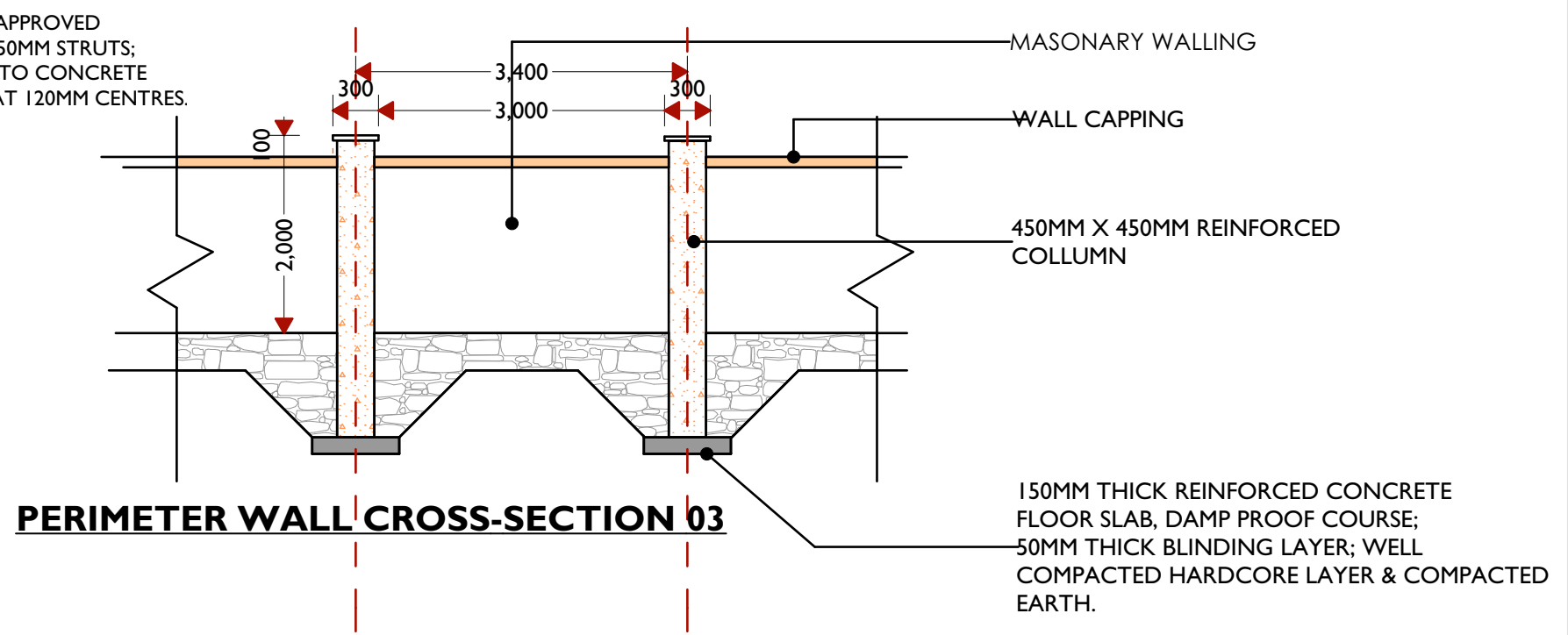
METAL HANG BAR

ALUMINIUM SASH CASEMENT WINDOW WITH 6MM THICK CLEAR GLASS, TO SCHEDULE.

900MM HIGH CONCRETE BLOCK TABLE.

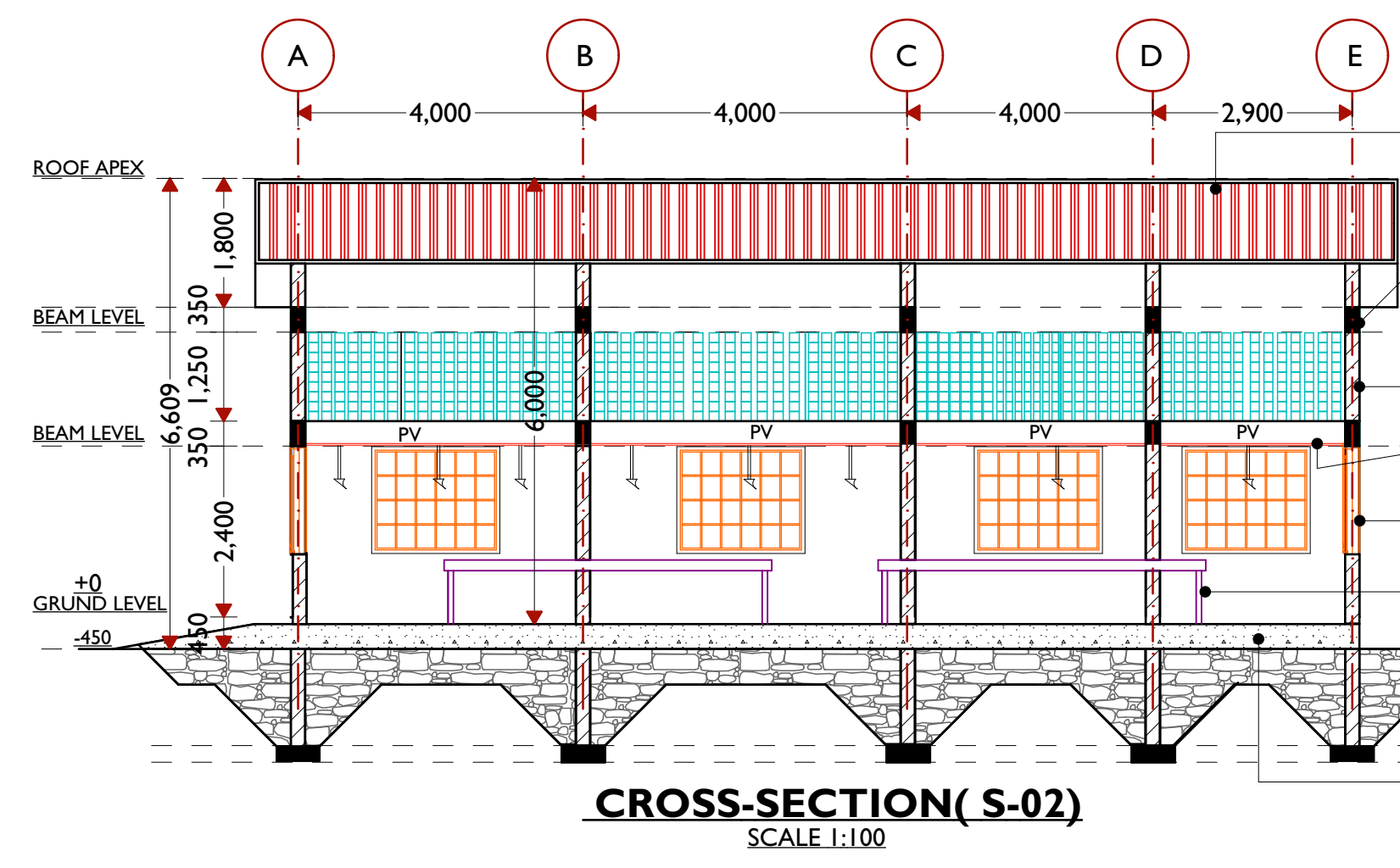
150MM THICK REINFORCED CONCRETE FLOOR SLAB, DAMP PROOF COURSE; 50MM THICK BLINDING LAYER; WELL COMPACTED HARDCORE LAYER & COMPACTED EARTH.

CROSS-SECTION (S-01)
SCALE 1:100



PERIMETER WALL CROSS-SECTION 03

150MM THICK REINFORCED CONCRETE FLOOR SLAB, DAMP PROOF COURSE; 50MM THICK BLINDING LAYER; WELL COMPACTED HARDCORE LAYER & COMPACTED EARTH.



27 DEGREE PITCH GAUGE 28 GI ROOF, WITH AN APPROVED ROOF COVERING ON 75 X 50MM PURLINS; 100 X 50MM STRUTS; 100 X 50MM TIES; 125 X 50MM WALL PLATE; FIXED TO CONCRETE WITH AND INCLUDING 12MM; DIAMETER BOLTS AT 120MM CENTRES.

200 X 350MM REINFORCED BEAM PLASTERED AND PAINTED TO ARCH, APPROVAL.

BUSH HAMMERED NATURAL STONE 200MM THICK MASONRY WALL PLASTERED AND PAINTED INTERNALLY.

METAL HANG BAR.

ALUMINIUM SASH CASEMENT WINDOW WITH 6MM THICK CLEAR GLASS, TO SCHEDULE.

CONCRETE BLOCK TABLE.

150MM THICK REINFORCED CONCRETE FLOOR SLAB, DAMP PROOF COURSE; 50MM THICK BLINDING LAYER; WELL COMPACTED HARDCORE LAYER & COMPACTED EARTH.

CROSS-SECTION (S-02)
SCALE 1:100

ARCHITECTS



GeConsult
ARCHITECTURE & ENGINEERING CONSULTANTS
Office No. 529,
5th Floor, 680 Hotel Building,
Muindi Mbingu Street,
Off Kenyatta Avenue,
geconsultteam@gmail.com
www.geconsultarchitects.com
P.O Box 103525 - 00101 Nairobi, Kenya
Tel: +254 724 008 839 / +254 725 178 875

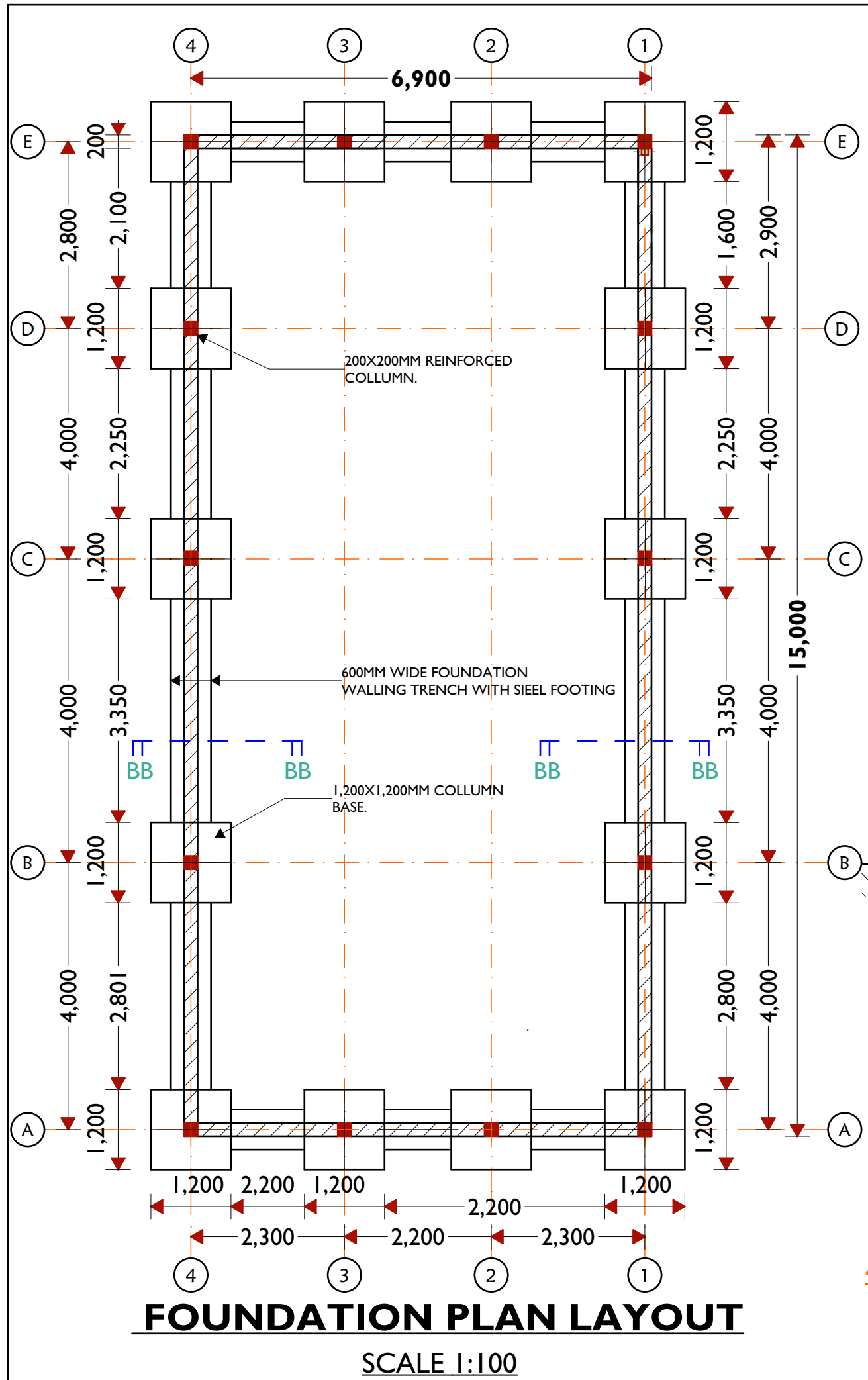
PROJECT DETAILS

Project Title: **PROPOSED BUTCHERY HOUSE AT HUDUR**

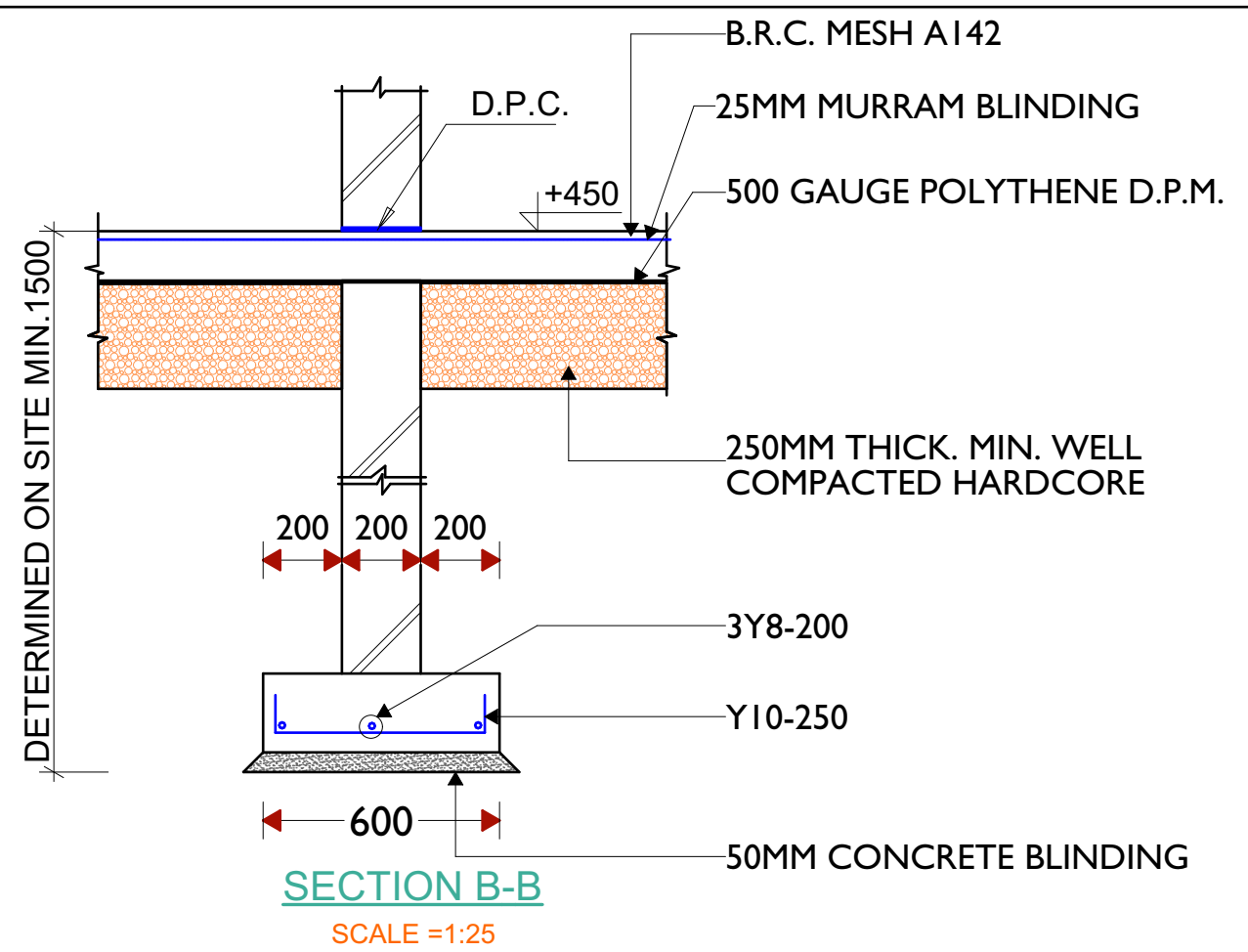
Client: **IOM Reintegration and Durable Solutions (RDS) Unit**



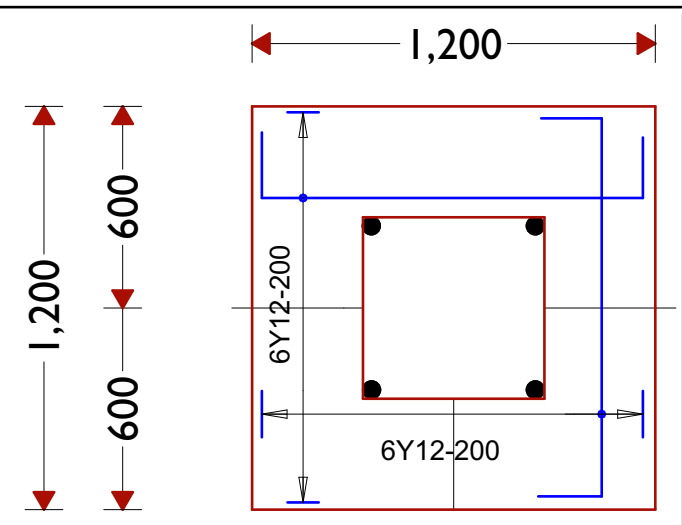
Drawing Title:		Revision No.	
SECTIONS			
Drawn by:	Checked & Approved by:	Sheet No.	Scale:
B.M	GeConsult		
Date:	AUGUST 2018		
ARCHITECTURAL DRAWINGS			



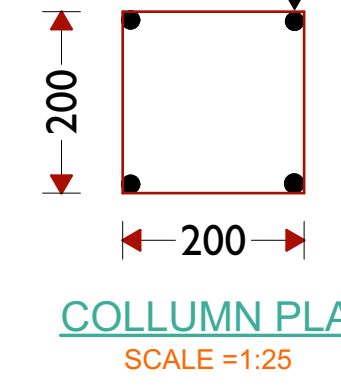
FOUNDATION PLAN LAYOUT
SCALE 1:100



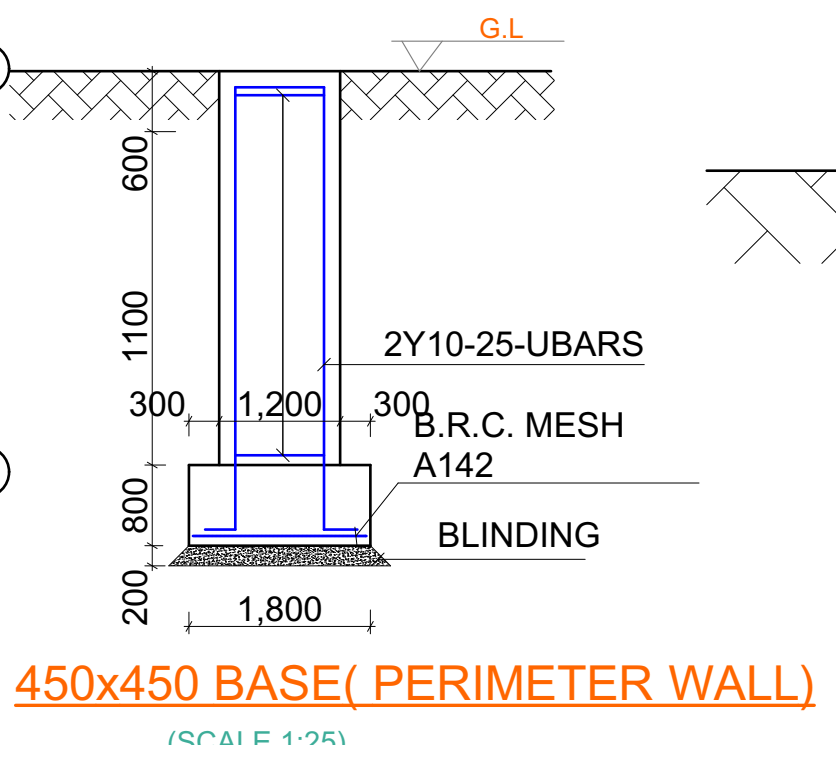
SECTION B-B
SCALE = 1:25



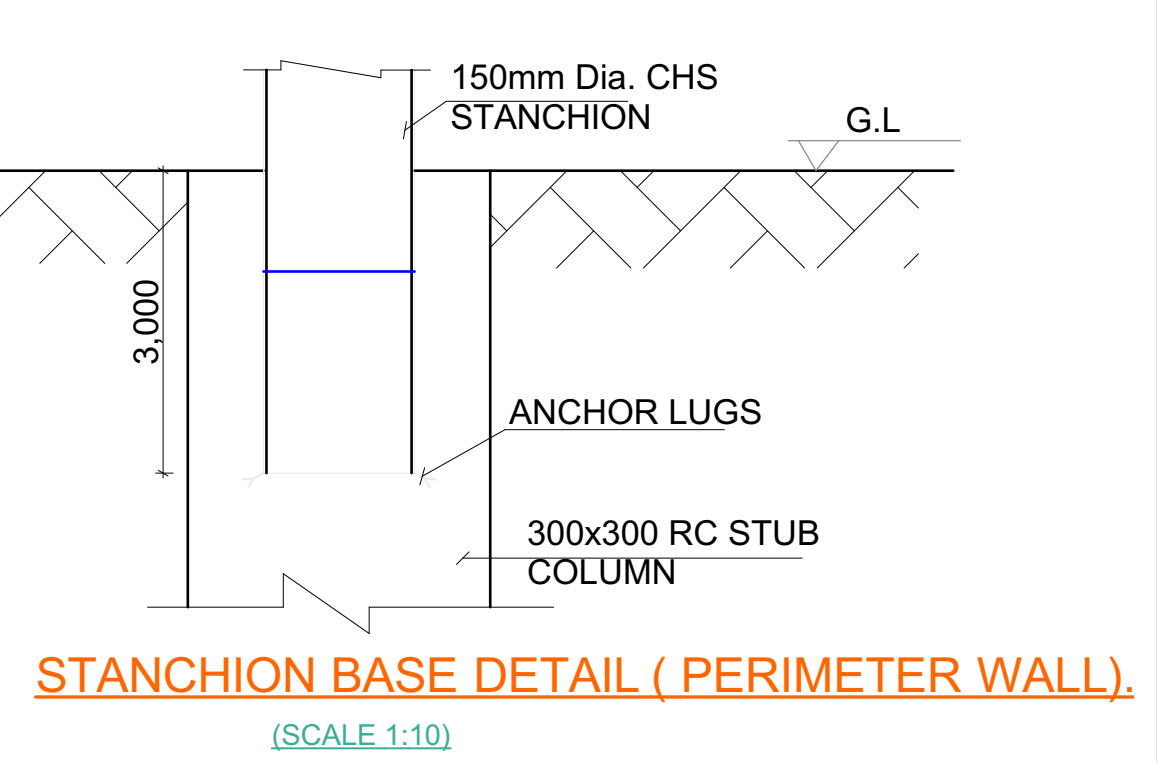
BASE
SCALE = 1:25
4Y10.
RING Y8-250



COLUMN PLAN
SCALE = 1:25



450x450 BASE (PERIMETER WALL)
SCALE 1:25



STANCHION BASE DETAIL (PERIMETER WALL)
SCALE 1:10

ARCHITECTS



GeConsult
ARCHITECTURE & ENGINEERING CONSULTANTS
Office No. 529,
5th Floor, 680 Hotel Building,
Muindi Mbingu Street,
Off Kenyatta Avenue,
geconsultteam@gmail.com
www.geconsultarchitects.com
P.O Box 103525 - 00101 Nairobi, Kenya
Tel: +254 724 008 839 / +254 725 178 875

PROJECT DETAILS

Project Title: **PROPOSED BUTCHERY HOUSE AT HUDUR**

Client: **IOM Reintegration and Durable Solutions (RDS) Unit**



Drawing Title: FOUNDATION LAYOUT.		Revision No.	
Drawn by: B.M	Checked & Approved by: GeConsult	Sheet No.	Scale:
Date: AUGUST 2018	ARCHITECTURAL DRAWINGS		

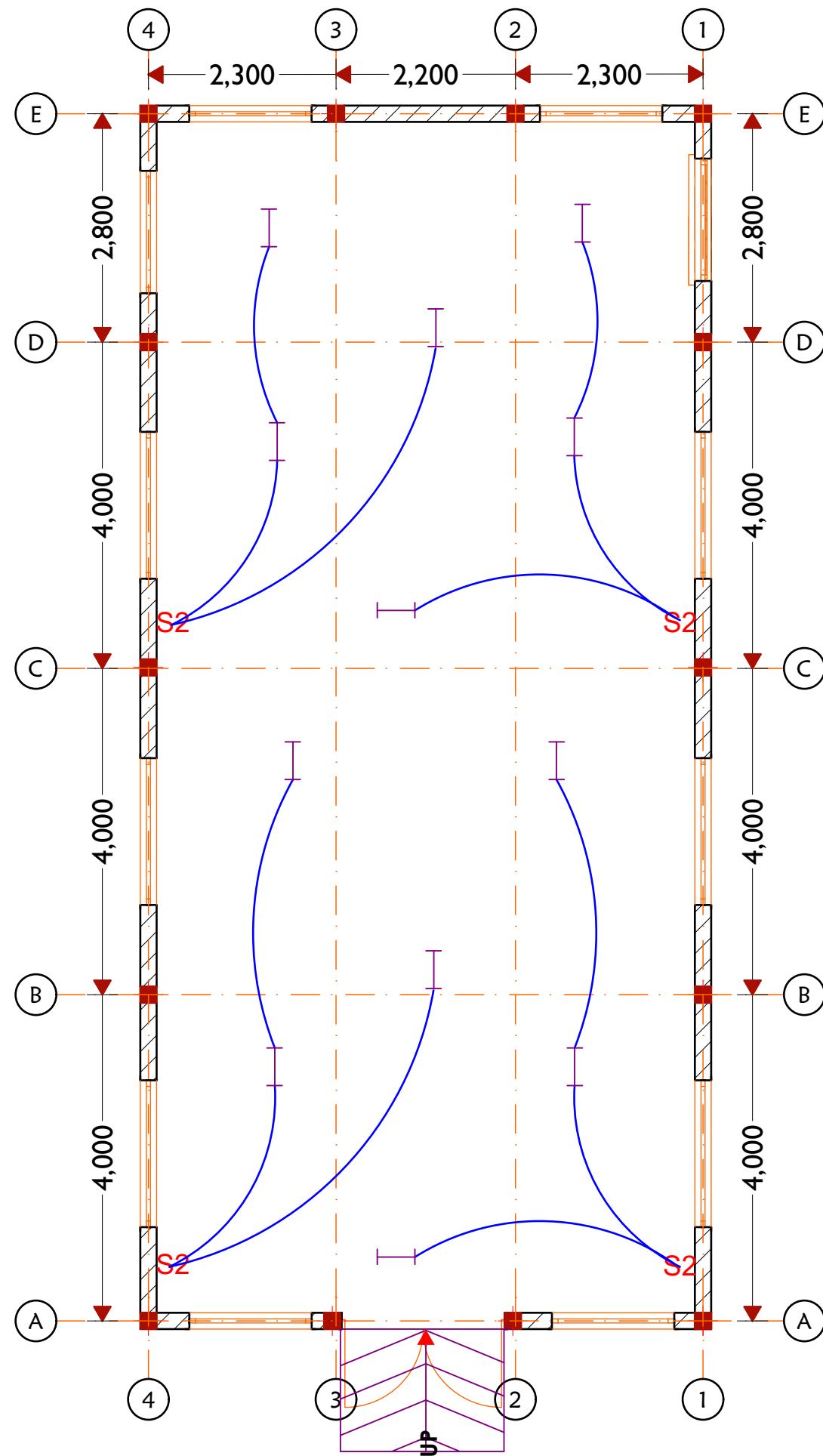
OPENING IMAGE	NAME	QTY	WIDTH	HEIGHT	DESCRIPTION
	D-01	1	2,000	2,400	M.S METAL DOUBLE SWING DOOR WITH LOCKABLE DOOR LATCH AND 3 WELDED HINGES.
	W-01	6	1,800	1,500	M.S MILD ALUMINIUM CASEMENT SASHES WINDOW
	W-02	4	1,500	1,500	M.S MILD ALUMINIUM CASEMENT SASHES WINDOW
	G-01	1	3,000	2000	M.S HEAVY METAL DOUBLE SWING GATE BOITED TO 300X300MM REINFORCED COLLUMN ON EITHER SIDES.

ARCHITECTS


GeConsult
ARCHITECTURE & ENGINEERING CONSULTANTS
Office No. 529,
5th Floor, 680 Hotel Building,
Muindi Mbingu Street,
Off Kenyatta Avenue,
geconsultteam@gmail.com
www.geconsultarchitects.com
P.O Box 103525 - 00101 Nairobi, Kenya
Tel: +254 724 008 839 / +254 725 178 875

PROJECT DETAILS
Project Title:
**PROPOSED BUTCHERY HOUSE
AT HUDUR**
Client

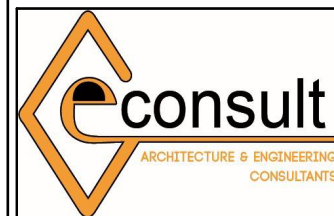
**IOM
Reintegration and Durable Solutions
(RDS) Unit**
Drawing Title:
**WINDOW & DOOR
SCHEDULE.**
Drawn by:
B.M
Date:
AUGUST 2018
Checked & Approved by
GeConsult
Revision No.
Sheet No.
Scale:
ARCHITECTURAL DRAWINGS



SYMBOL	MEANING
	CEILING MOUNTED LIGHT FIXTURE.
	CEILING MOUNTED LIGHT FIXTURE (PENDANT)
	WALL MOUNTED LIGHT FIXTURE
	RECESSED SPOT LIGHT
	FLUORESCENT LIGHT FIXTURE
	FLUORESCENT LIGHT FIXTURE UNDER FALSE CEILING
	WIRING CONNECTION
	FLUORESCENT LIGHT FIXTURE WITH SHAVER SOCKET & LOCALISED SWITCH
	FLUORESCENT LIGHT FIXTURE WITH LOCALISED SWITCH
	SINGLE PLEX RECEPTACLE
	DUPLEX RECEPTACLE
	SPECIAL RECEPTACLE & OUTLET (WITH PILOT LIGHT)
	WATER PROOF RECEPTACLE (SINGLE)
	CONSUMER UNIT
	TELEPHONE/TV JACK
	ALARM KEYPAD
	DOORBELL PUSH BUTTON
	DOORBELL TRANSFORMER
S3	3 gang switch
S2	2 gang switch
S	Single pole switch
	Flood lamp

ELECTRICAL PLAN LAYOUT
SCALE 1:100

ARCHITECTS



GeConsult
ARCHITECTURE & ENGINEERING CONSULTANTS
Office No. 529,
5th Floor, 680 Hotel Building,
Muindi Mbingu Street,
Off Kenyatta Avenue,
geconsultteam@gmail.com
www.geconsultarchitects.com
P.O Box 103525 - 00101 Nairobi, Kenya
Tel: +254 724 008 839 / +254 725 178 875

PROJECT DETAILS

Project Title:

PROPOSED BUTCHERY HOUSE
AT HUDUR

Client



IOM
Reintegration and Durable Solutions
(RDS) Unit

Drawing Title:

ELECTRICAL DRAWING.

Revision No.

Drawn by:

B.M

Checked & Approved by

GeConsult

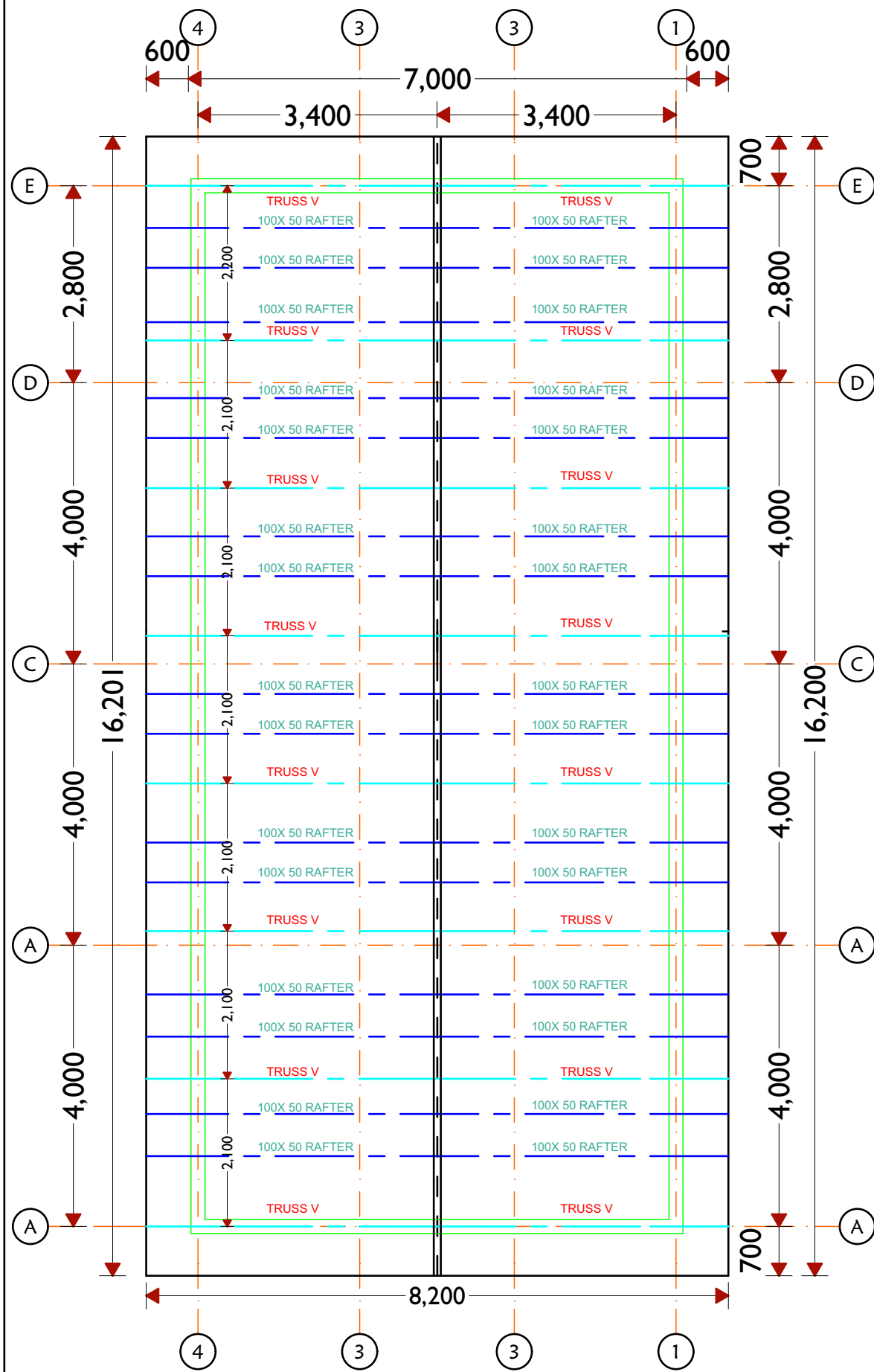
Sheet No.

Scale:

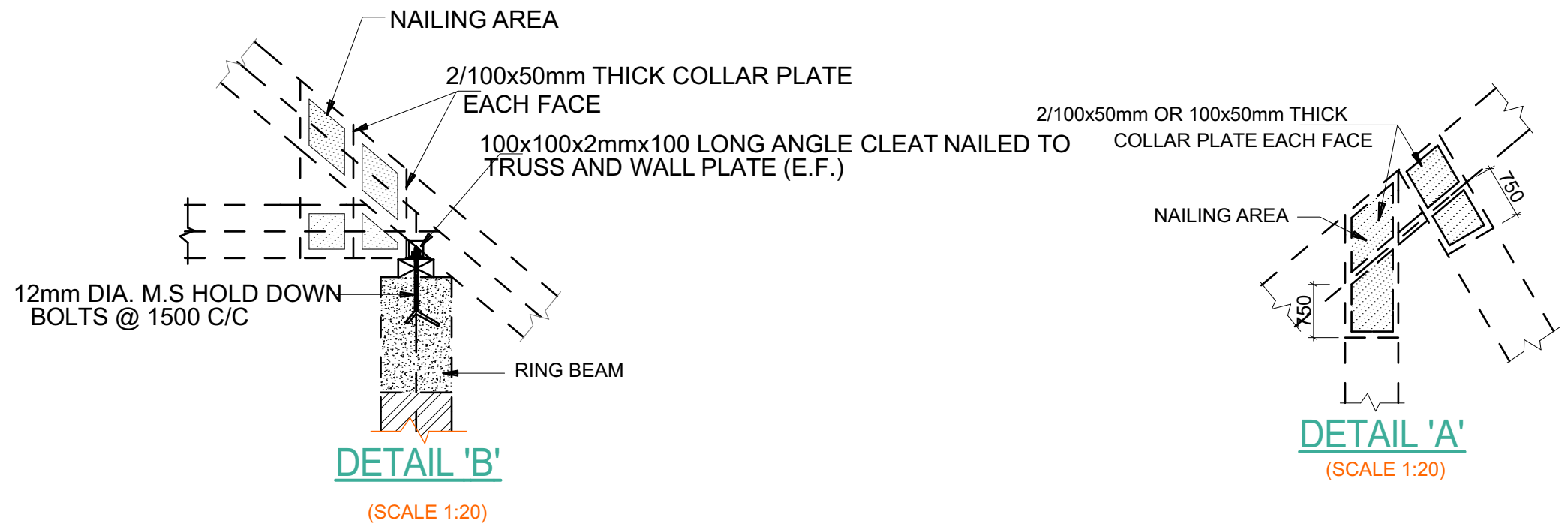
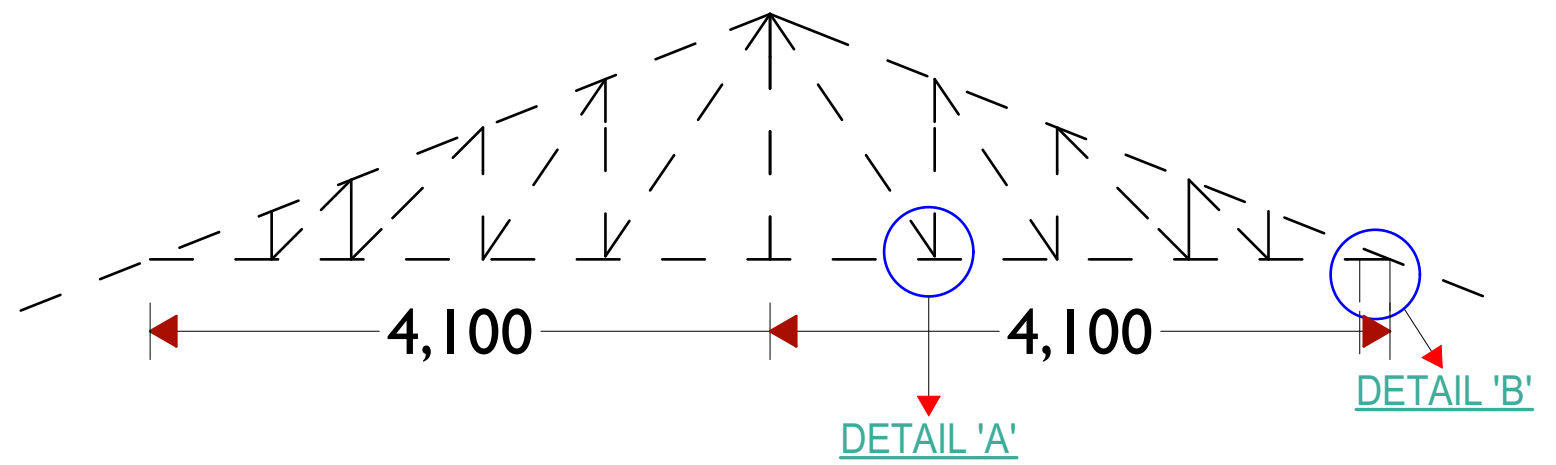
Date:

AUGUST 2018

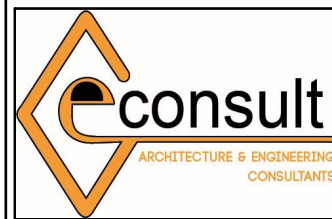
ARCHITECTURAL DRAWINGS



ROOF PLAN LAYOUT
SCALE 1:100



ARCHITECTS



GeConsult
ARCHITECTURE & ENGINEERING CONSULTANTS
Office No. 529,
5th Floor, 680 Hotel Building,
Muindi Mbingu Street,
Off Kenyatta Avenue,
geconsultteam@gmail.com
www.geconsultarchitects.com
P.O Box 103525 - 00101 Nairobi, Kenya
Tel: +254 724 008 839 / +254 725 178 875

PROJECT DETAILS

Project Title:

PROPOSED BUTCHERY HOUSE
AT HUDUR

Client



IOM
Reintegration and Durable Solutions
(RDS) Unit

Drawing Title:

ROOF LAYOUT.

Revision No.

Drawn by:

B.M

Checked & Approved by

GeConsult

Sheet No.

Scale:

Date:

AUGUST 2018

ARCHITECTURAL DRAWINGS