
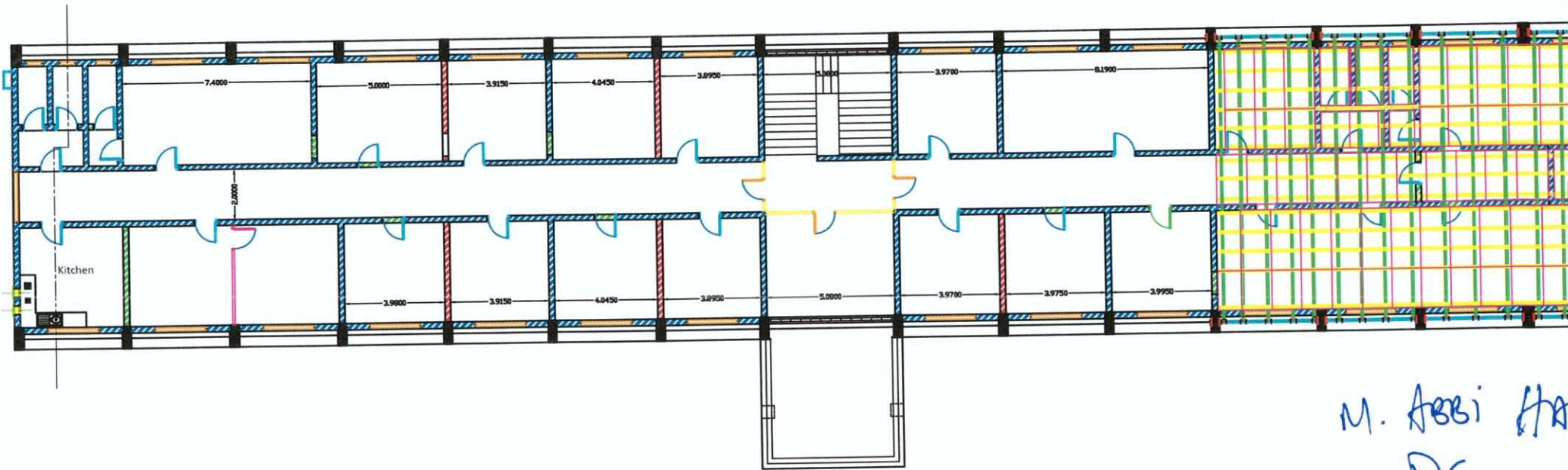



After modification plan


 DG/ Abbi
 21-01-202



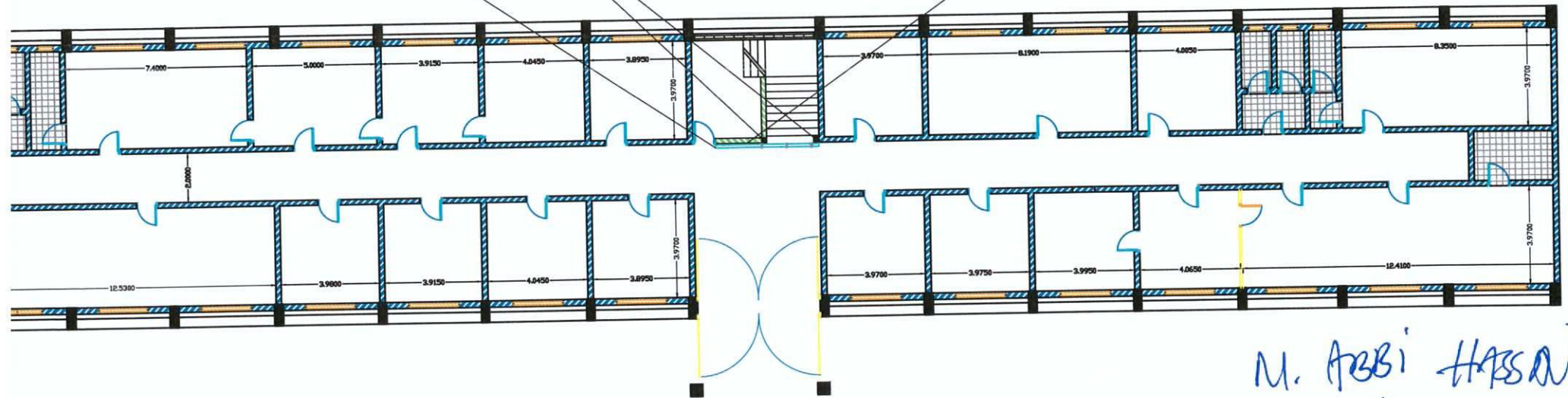
Modification activities of the first floor of the building

M. Abbi HA
 DG

 21-01

Sliding door of 240cm wide and approximately 300cm height with pedestrian door of 90cm wide and 220cm height.

Two reinforced concrete columns of 20cm x20cm and approximately 300cm height. The concrete should be 1:2:4 mixing ratio

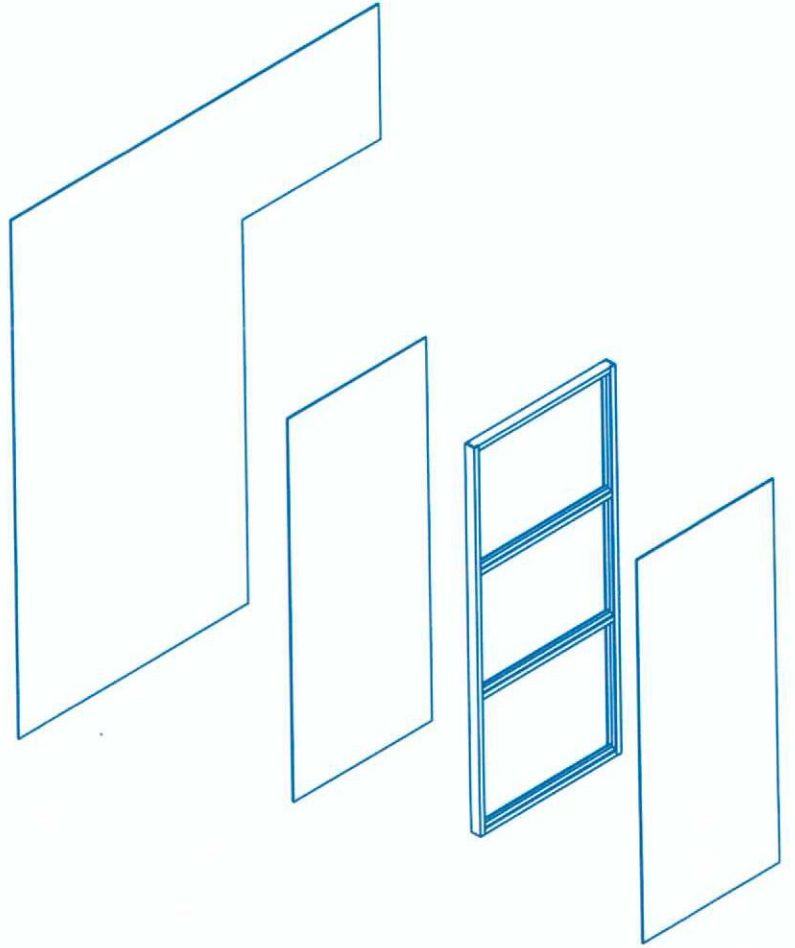
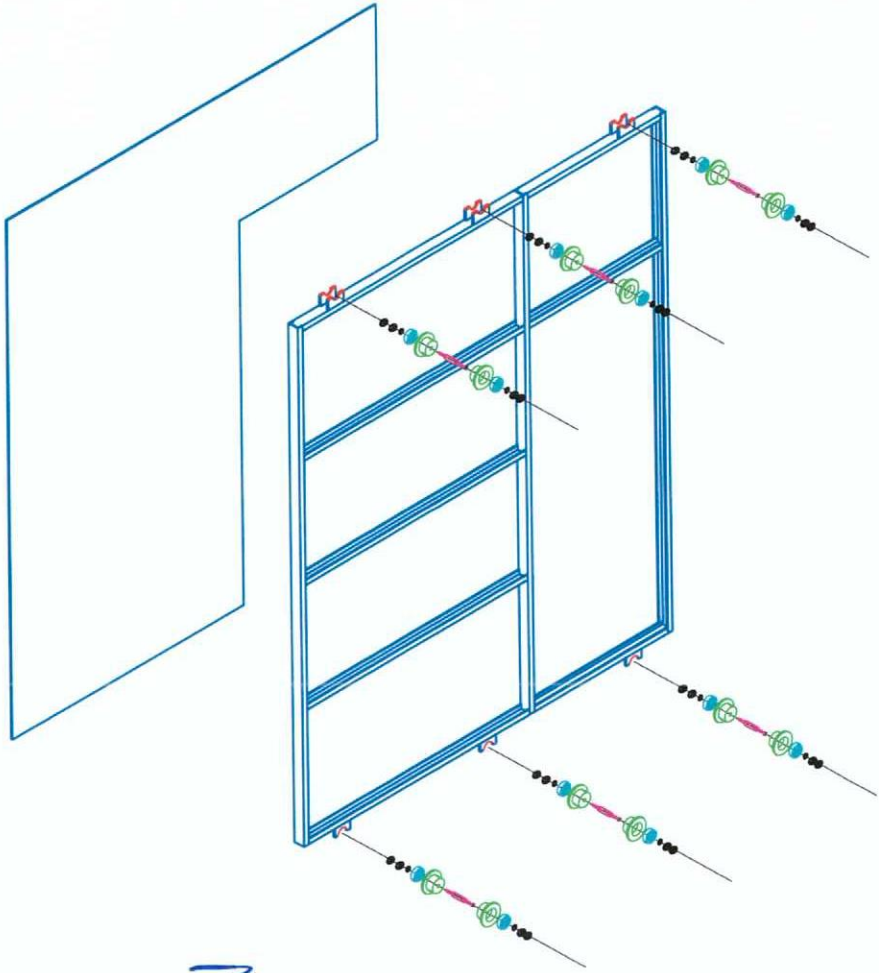
Masonry cement hollow blocks filled holes by cement plain cement concrete mortar of 1:2:4 mixing ratio




Ground floor of the building after implementation

M. Abbi Hassan

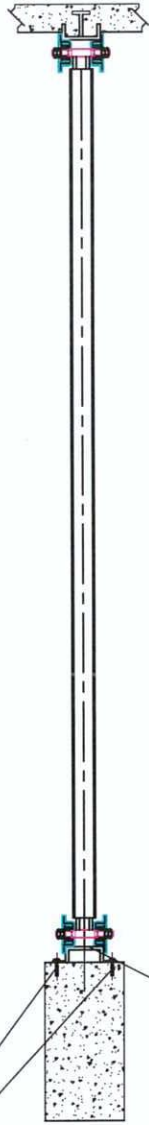
[Handwritten signature]
21-01-2020



21-01-2020

 M. Prasi Hassan

Heavy duty concrete anchors or wall bolts of 14mm diameter and 120mm length for fixing objects to masonry surfaces.

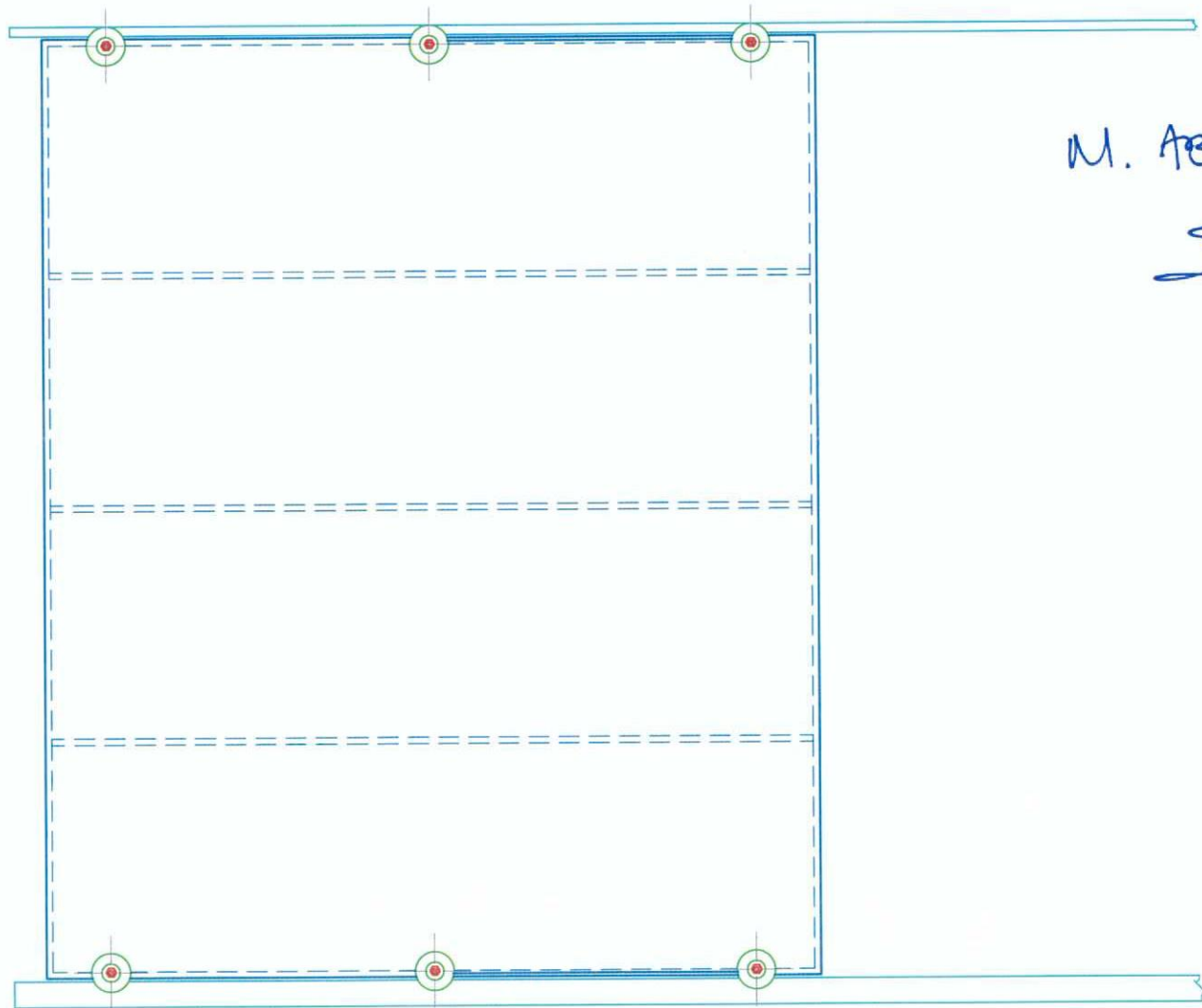
Top guide line railway made by UPN - 120mmx50mmx6mm of approximately 4,500mm length.



M. Abbi Hassan

DC

21-01-2020



M. ABBI HASSAN

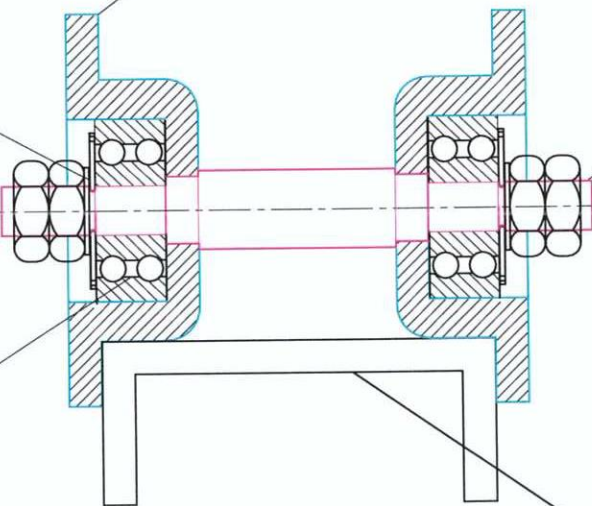
21-01-20

Steel roller wheel of 40mm total thickness (10mm for the height part and 30mm short part).

Steel shaft of 180mm total length (50mm for the two ends, 10mm for the two steps and 60mm in the middle) with three different diameters accordingly (ϕ 16mm for two ends, 20mm for the two second step and ϕ 24mm in the middle).

Stopping ring to avoid the movement of the bearing to get out of the system.

Double bearing system to get soft the movement of the sliding gate with dust and water cover to seal properly



UPN - 120mmx50mmx6mm of 12m length for railway to guide the sliding boom gate.

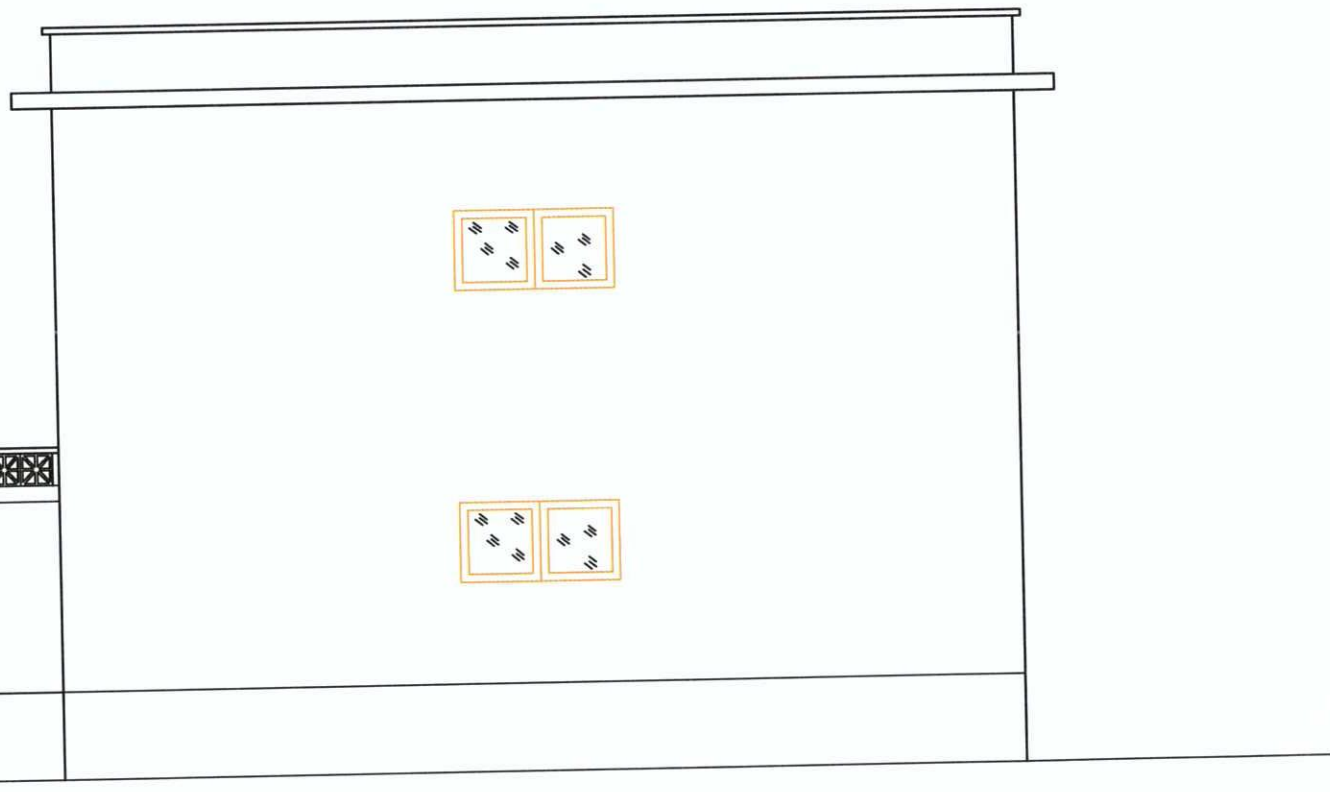
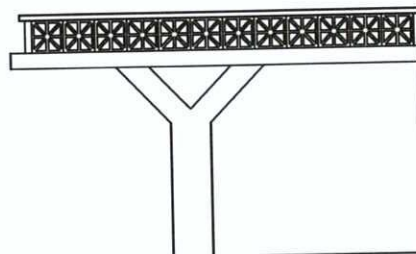
M. Abbi Hassan
[Signature]
21-01-20

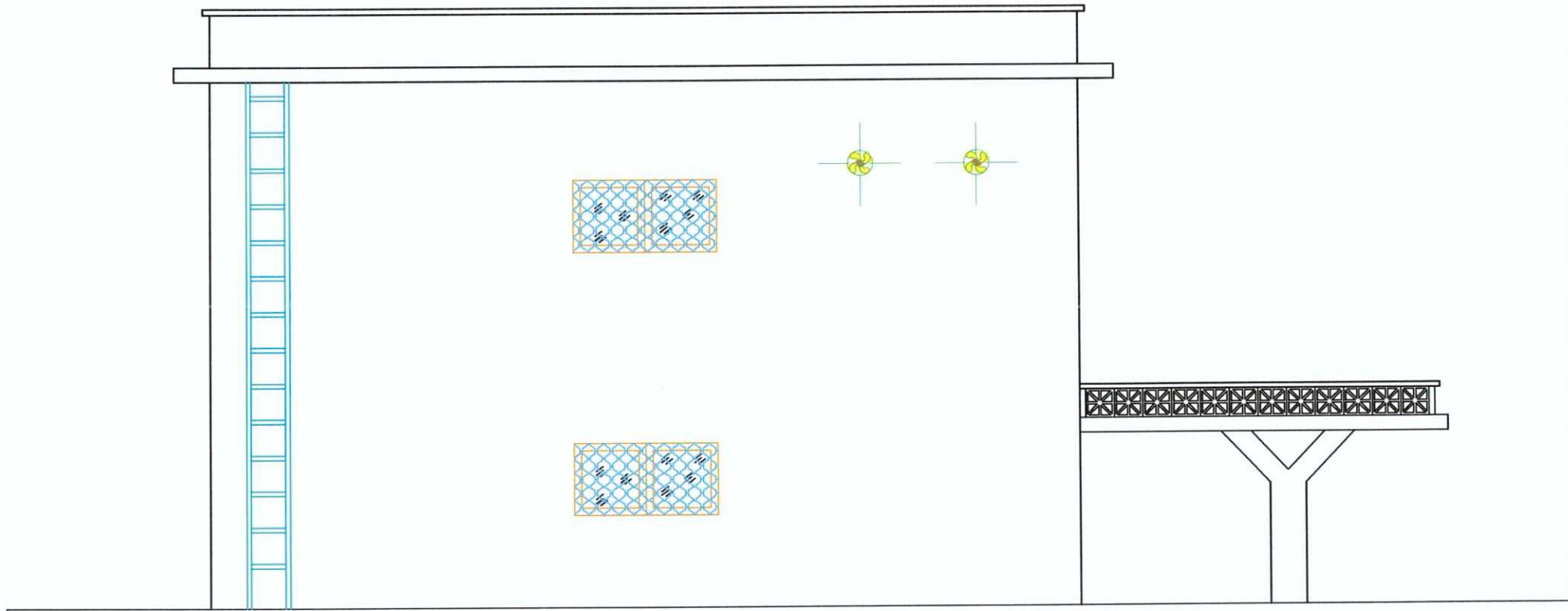
Details of movement system of MOJ sliding door inside of the building.


20/10/08

~~Handwritten signature~~

M. HOSSEINI

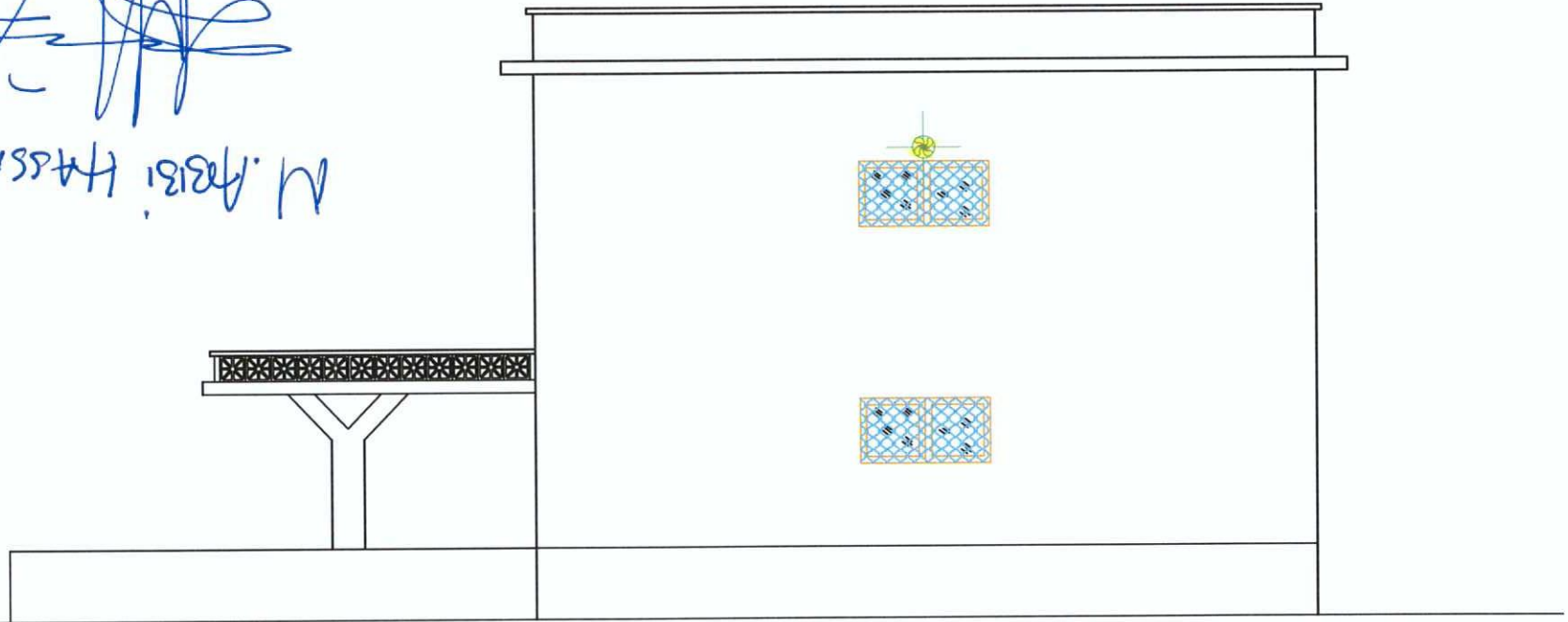


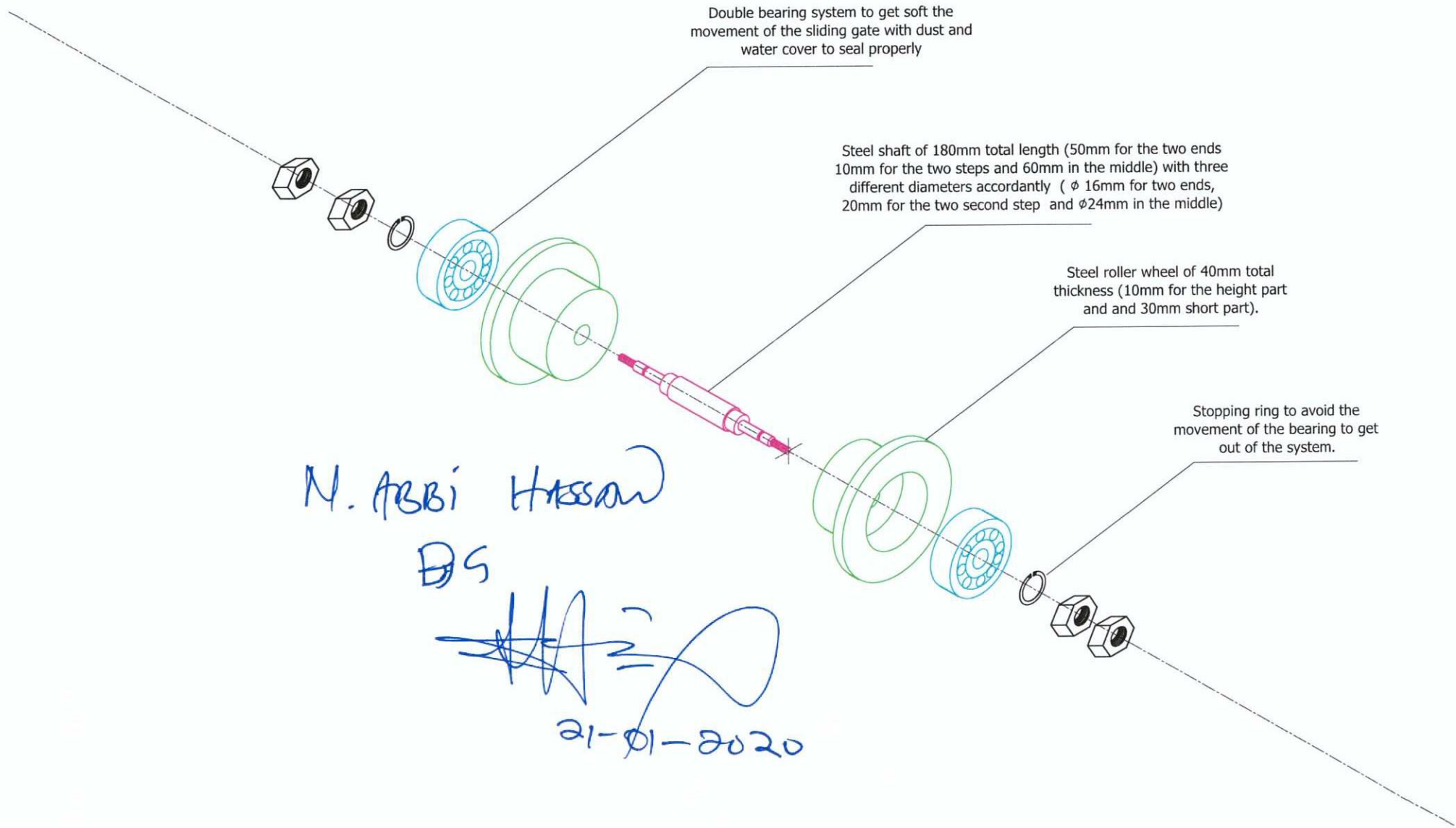


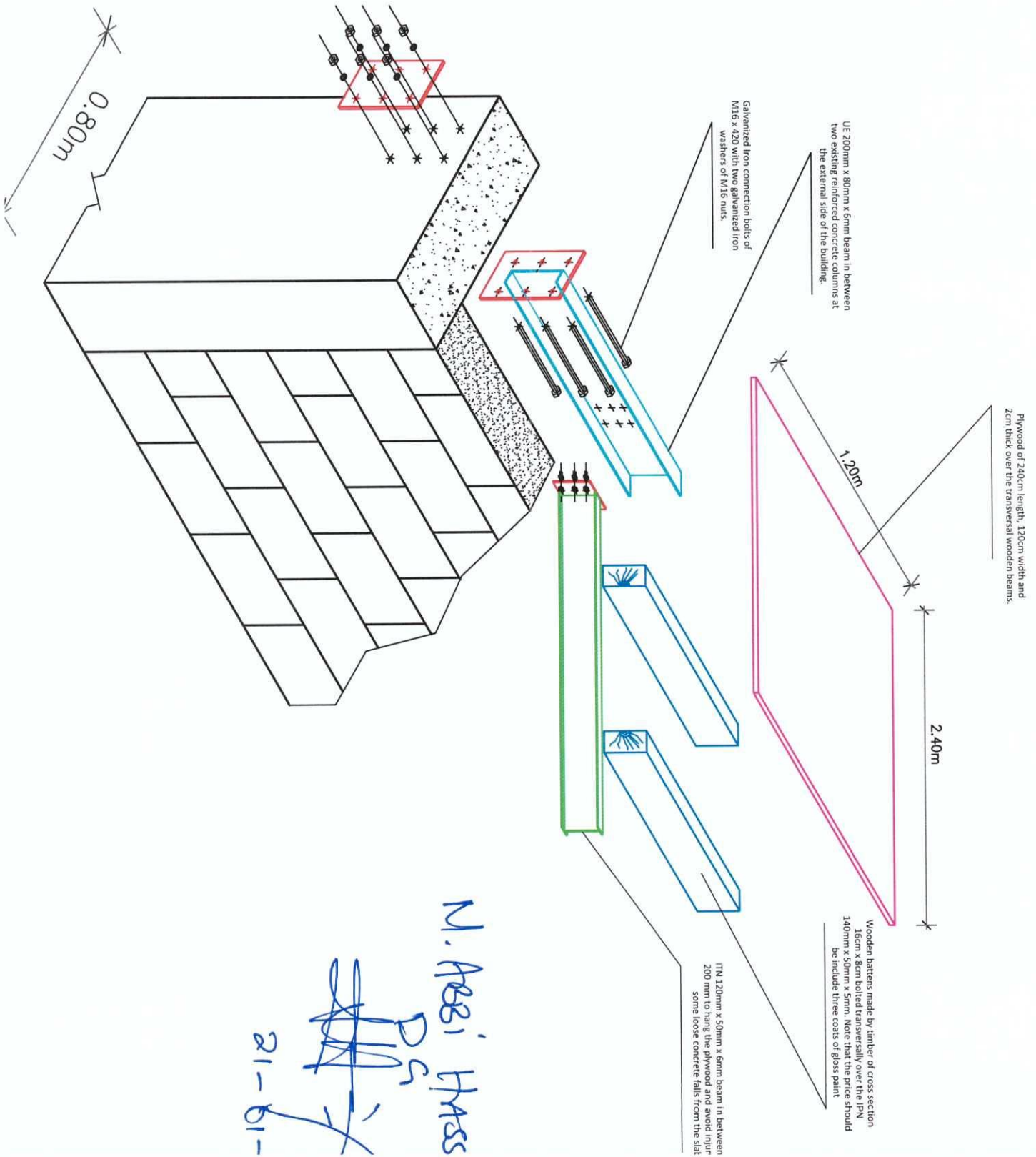
M. Abbi Hassanu

21-01-20

21-01-2020

Handwritten signature and the name "M. Aris Hassan" written upside down.





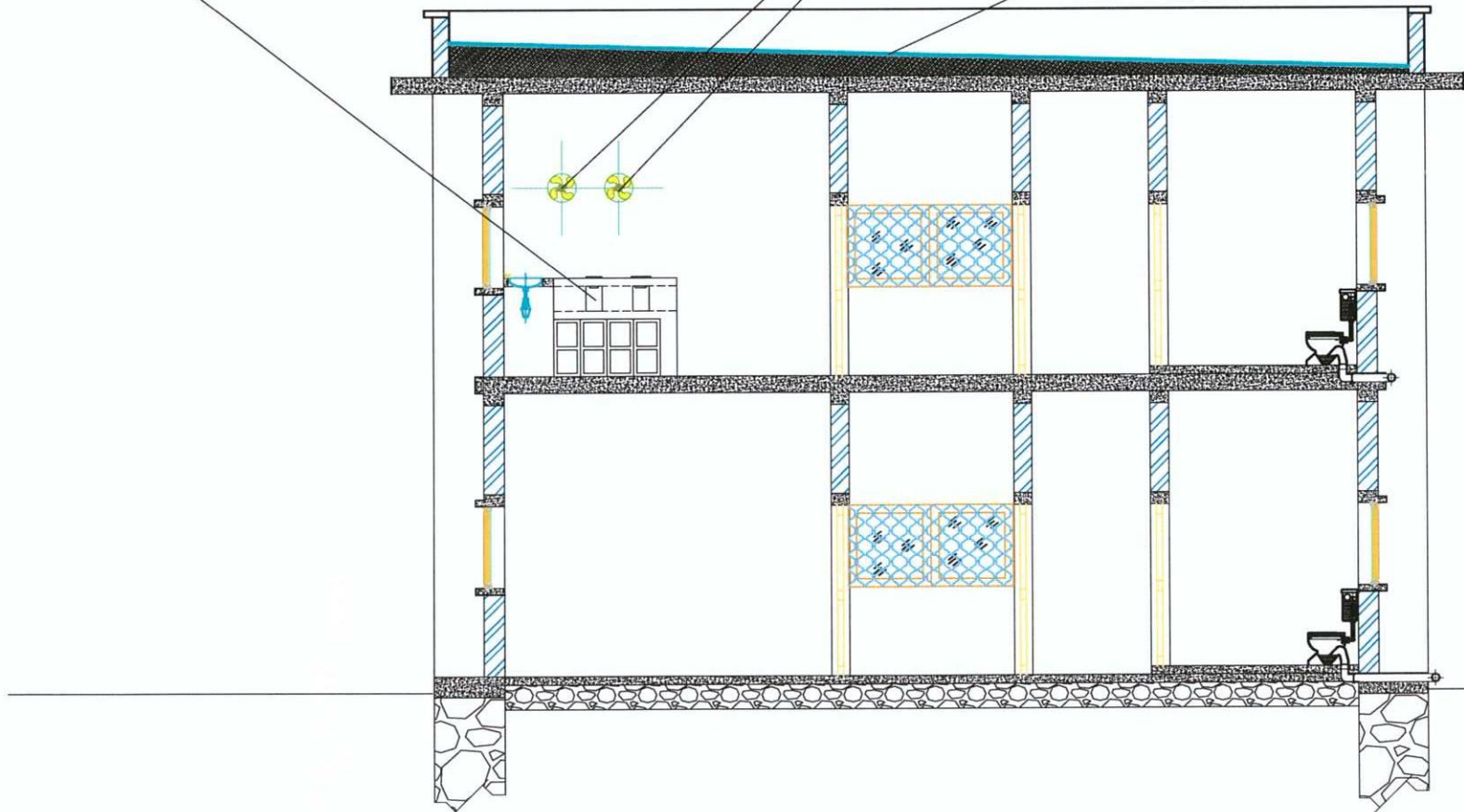


M. ABBASI MASS
 PS
 21-61-

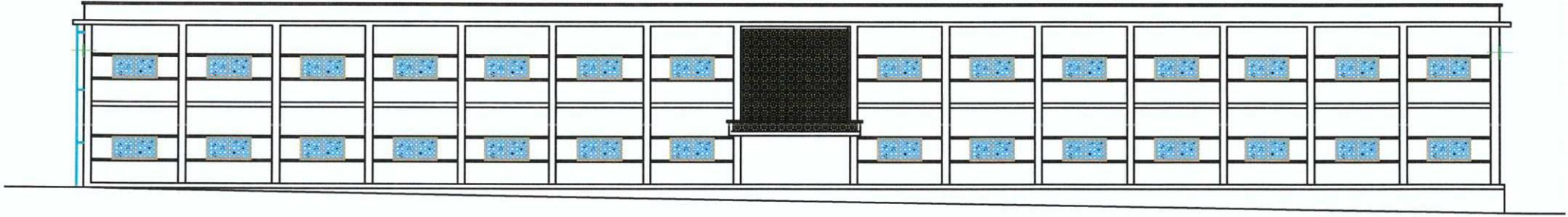
First quality smoke sucking electrical machine to avoid smoke or smell suffocation during cooking time.

First quality bitumen paper on top surface to avoid rain penetration of water during the rain season.

Construction of kitchen made with stands of masonry cement blocks and two layer of 10cm thick reinforced concrete platforms. Finally provide and fix two steel kitchen fire grills. Note that there will be two double wings wooden windows in order to have two small cupboards.



M. ABBI
[Signature]
21-01-

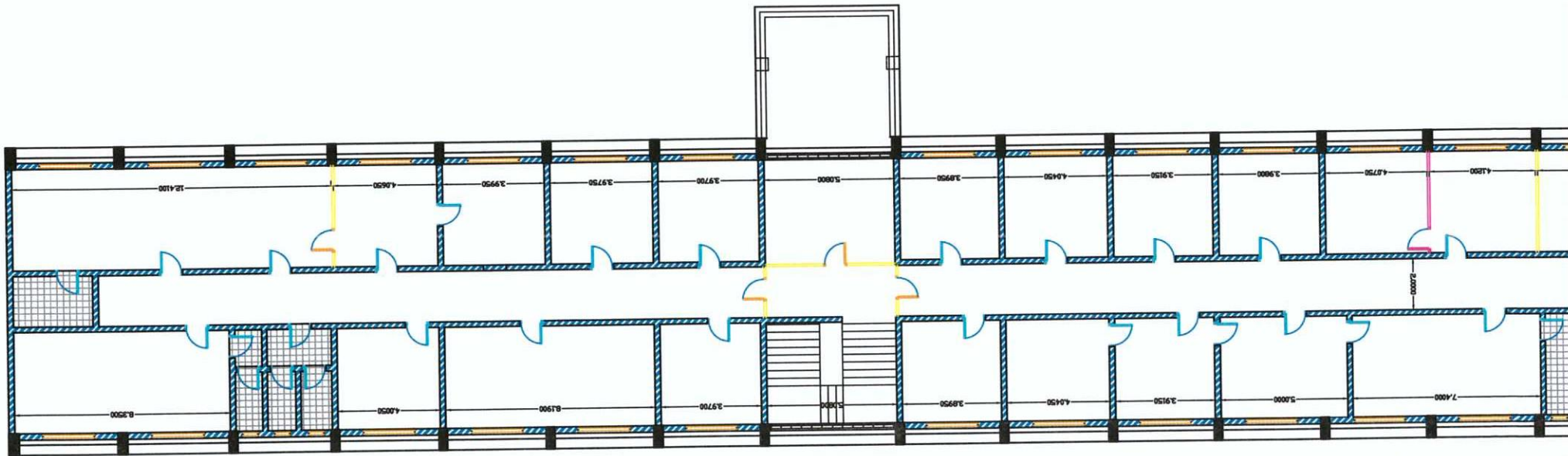


A handwritten signature in blue ink, consisting of several vertical lines on the left and a large, stylized loop on the right.

Dh Abbi

21-01-2020

Current plan of the first floor of the building



M. ABISI HASSAN

DC

21-01-20